

Impact of a False-Positive Screening Mammogram on Subsequent Screening Behavior and Stage at Breast Cancer Diagnosis

Firas M. Dabbous¹, Therese A. Dolecek², Michael L. Berbaum³, Sarah M. Friedewald⁴, Wm. Thomas Summerfelt⁵, Kent Hoskins⁶, and Garth H. Rauscher²

Abstract

Background: Experiencing a false positive (FP) screening mammogram is economically, physically, and emotionally burdensome, which may affect future screening behavior by delaying the next scheduled mammogram or by avoiding screening altogether. We sought to examine the impact of a FP screening mammogram on the subsequent screening mammography behavior.

Methods: Delay in obtaining subsequent screening was defined as any mammogram performed more than 12 months from index mammogram. The Kaplan–Meier (product limit) estimator and Cox proportional hazards model were used to estimate the unadjusted delay and the hazard ratio (HR) of delay of the subsequent screening mammogram within the next 36 months from the index mammogram date.

Results: A total of 650,232 true negative (TN) and 90,918 FP mammograms from 261,767 women were included. The likeli-

hood of a subsequent mammogram was higher in women experiencing a TN result than women experiencing a FP result (85.0% vs. 77.9%, $P < 0.001$). The median delay in returning to screening was higher for FP versus TN (13 months vs. 3 months, $P < 0.001$). Women with TN result were 36% more likely to return to screening in the next 36 months compared with women with a FP result HR = 1.36 (95% CI, 1.35–1.37). Experiencing a FP mammogram increases the risk of late stage at diagnosis compared with prior TN mammogram ($P < 0.001$).

Conclusions: Women with a FP mammogram were more likely to delay their subsequent screening compared with women with a TN mammogram.

Impact: A prior FP experience may subsequently increase the 4-year cumulative risk of late stage at diagnosis. *Cancer Epidemiol Biomarkers Prev*; 1–7. ©2017 AACR.

Introduction

Screening mammography is an established routine public health procedure for the early detection of breast cancer and has been shown to reduce mortality from the disease (1). Along with the benefits of early detection, mammography screening is also associated with false positive (FP) results that lead to unnecessary additional imaging and biopsy procedures as well as associated financial costs, lost time, and psychologic and physical morbidity (2–4). FP rates have been estimated to be as high as 10% of screening mammograms (5), and roughly 50% of women who screen annually for 10 years can expect at least one FP mammogram finding, of which 7%–17% will require biopsy (6, 7). The FP screening mammogram issue is part of an ongoing debate regard-

ing the extent to which the risk of mammography screening might outweigh the benefits in certain women (8, 9). Therefore, the most recent guidelines set forth by the United States Preventative Services Task Force (USPSTF) advised against routine screening in women aged 40–49 years of age and women 75 years or older (10).

Furthermore, a FP mammogram could lead women to alter their future screening behavior, either by delaying the next scheduled mammogram or foregoing the exam altogether. Studies that have examined the potential impact of a FP mammogram on subsequent adherence to screening mammography recommendations have yielded inconsistent findings. Several studies found that re-screening rates were actually higher among women who experienced a FP as opposed to a TN (11, 12), whereas other studies found no difference in re-screening rates based on screening mammography outcome (13–16). Still other reports documented lower re-screening rates for women experiencing FP compared with those with TN mammograms (17–20). A 2007 meta-analysis which pooled data from the above studies found that in Europe and Canada, women who experienced a FP screening mammogram were less likely to return for their next screen compared with women with TN screen finding. Conversely, women in the United States were associated with greater subsequent screening mammography adherence after experiencing a FP (21). The primary study objective was to examine the impact of a FP screening mammogram on the receipt of subsequent screening mammography among a racially diverse population in a network of mammography centers within a large health care organization. The secondary objective was to determine whether the experience

¹James R. & Helen D. Russell Institute for Research & Innovation, Advocate Health Care, Park Ridge, Illinois. ²Division of Epidemiology and Biostatistics, University of Illinois at Chicago, Chicago, Illinois. ³Institute for Health Research and Policy, University of Illinois at Chicago, Chicago, Illinois. ⁴Northwestern University Feinberg School of Medicine, Chicago, Illinois. ⁵Advocate Health Care, Downers Grove, Chicago, Illinois. ⁶Department of Medicine, University of Illinois at Chicago, Chicago, Illinois.

Corresponding Author: Dr. Firas Dabbous, James R. & Helen D. Russell Institute for Research & Innovation, Advocate Health Care, 1700 Luther Lane, Suite 1410, Park Ridge, IL 60068. Phone: 847-723-2691; Fax: 847-723-7776; E-mail: Firas.Dabbous@advocatehealth.com

doi: 10.1158/1055-9965.EPI-16-0524

©2017 American Association for Cancer Research.

of a FP result at index mammogram increases the risk of subsequent late-stage disease for those women subsequently diagnosed with breast cancer.

Materials and Methods

Mammography screening data on women were obtained from a large health care organization with multiple facilities in the greater metropolitan Chicago area. Facilities within this health-care organization used PenRad to collect radiology information and patient characteristics (22). PenRad was first introduced in 2001 and was implemented at all facilities by 2005. Breast cancer incidence data were obtained from the Illinois State Cancer Registry (ISCR; ref. 23), which collects information on all incident cancer cases in the state of Illinois.

The radiology dataset included patient-level data on demographic characteristics and risk factors, and exam-level data on procedure types and results that were performed between January 1, 2001, and December 31, 2014. Each mammogram was interpreted by the reading radiologist and was given a score using the American College of Radiology (ACR) classification system known as Breast Imaging Reporting and Data System (BIRADS). BIRADS assessment for screening and diagnostic mammography ranges from 0 to 5 such that 0 = need additional imaging evaluation, 1 = negative finding, 2 = benign finding, 3 = probably benign finding, 4 = suspicious abnormality, and 5 = finding highly suggestive of malignancy.

Family history was self-reported and was defined as none (no first- or second-degree relatives affected), weak (only second-degree relatives affected), moderate (one first-degree relative over age 50 affected), and strong (multiple first-degree relatives affected or one under age 50). Age was determined by taking the difference between date of index mammogram and date of birth. Race/ethnicity was self-reported as nonHispanic (nH) white, nH black, Hispanic, other, and unknown. Personal history of prior biopsy was defined as present if a prior biopsy existed in the radiology dataset or if it was self-reported. Time since last mammogram was defined as 9–18 months, 19–30 months, >30 months and no prior mammogram based on the radiology dataset. Breast density was defined following the ACR classification as composed almost entirely of fat, scattered fibroglandular densities, heterogeneously dense and extremely dense.

Women with a prior history of breast cancer or who developed breast cancer anytime during the study period were excluded from these analyses as were women with a history of breast reduction, breast implants, and breast reconstruction or mastectomy. Screening mammograms which were preceded by any radiologic exam in the prior 9 months were also excluded. In the case of multiple exams on the same day, only the first exam in the sequence was used in the analysis.

A linkage of 755,567 screening mammograms completed between 2001 and 2010 to ISCR patients diagnosed with breast cancer for diagnosis years 2001–2011 was performed. To allow 12 months of follow up for cancer diagnosis, we restricted our analytic dataset to include bilateral screening mammograms that were performed January 1, 2001, and December 31, 2010. On the basis of the mammograms interpretation and cancer status within 12 months of the screen, screening mammograms were defined as true positive (TP), true negative (TN), FP, and false negative (FN) screens. For these analyses, we compared the experiences of

women with FP and TN mammograms. The unit of analysis was the screening mammogram.

A TN mammogram was defined as any mammogram with BIRADS (1, 2, 3) and that cancer was not detected in the subsequent 12 months from date of screening mammogram; although a FP mammogram was defined as any mammogram with BIRADS (0,4,5) and that cancer was not detected in the subsequent 12 months from date of screening mammogram. The burden of FP was defined as the number of additional imaging after a FP mammogram and morbidity was defined as the receipt of biopsy after a FP mammogram. Women with a TN mammogram were assumed to have no additional work up during the follow-up period.

Because the recommended interval for routine screening is at least 12 months, we defined the index date ($T = 0$) as 365 days after the index screening date. Therefore, any index screening mammograms that were followed with a subsequent screening mammogram prior to 12 months were excluded ($N = 14,417$, 1.9%). Follow-up period was defined as the number of months between the index date and the date of the subsequent screening mammogram or 36 months, whichever came first. Women who did not return to screening at our network were considered right censored and their follow-up time was estimated as the difference between index date and December 31, 2014. This date was used because our data included all screening mammograms that were performed on or before December 31, 2014. The dependent variable for the primary analysis was the number of months (T) after index date for both TN and FP mammograms (Fig. 1).

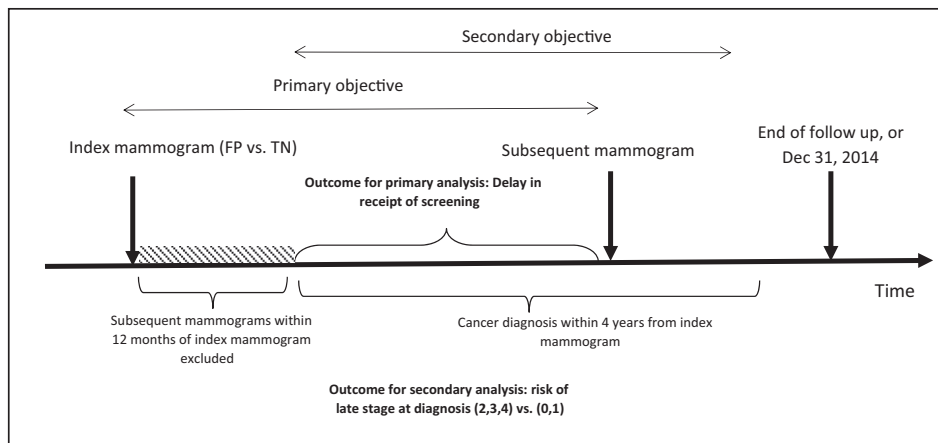
In an additional analysis, we adjusted the follow-up time to account for the time required to resolve a positive mammogram by setting the index date to be the date of the last diagnostic procedure related to the index mammogram on file.

For the primary objective, we excluded exams from women who were diagnosed with breast cancer at any point during our study period. For the secondary analysis in which we examined the impact of FP on stage at diagnosis, we excluded screens that were followed with a breast cancer diagnosis in the subsequent 12 months as well as cancers that were diagnosed more than 48 months from screening mammogram. The dependent variable was late stage at diagnosis which was defined according to the American Joint Committee on Cancer (AJCC) and categorized as late stage (stage 2, 3, 4) vs. early stage at diagnosis (stage 0 or 1).

Patient characteristics by mammogram result (TN vs. FP) and by stage at diagnosis were tabulated. The Kaplan–Meier (product limit) estimator was used to estimate the overall unadjusted delay in return to screening by mammogram result (TN vs. FP), and log-rank tests were used to compare the differences between the two curves. Cox proportional hazard models were used to estimate the hazard ratio (HR) for delay in the receipt of subsequent screening mammogram within the next 36 months from the index mammogram date. Women who did not return to screening at this network were right censored as well as women who returned to screening after 36 months from index mammogram date. In addition to mammogram result (TN vs. FP), the model included variables for age, race/ethnicity, family history of breast cancer, mammographic breast density, parity, prior history of biopsy, time since last screening mammogram, calendar year, availability of comparison film and facility. Stratum-specific HRs were generated using the same model as above with the addition of each individual product term between the index mammogram result and the variable of interest. Similar results were observed when

Figure 1.

Primary and secondary analyses design overview FP versus TN. The first arrow represents the index mammogram (TN and FP mammograms only). The shaded area represents the first 12 months after index mammogram and index date ($T = 0$) was defined at the end of the shaded area. Mammograms that were followed by a screening mammogram within 12 months were excluded. The second arrow represents the subsequent mammogram after index mammogram. For the secondary analyses, the cumulative risk of late stage at diagnosis was estimated over a 4-year period following the index mammogram.



using the proportional hazards model with an independent working assumption and robust sandwich covariance matrix estimate to account for the intraclass dependence. Therefore, the proportional hazards model without clustering was used.

In addition to multivariable models described above, a propensity score matching technique was used to match on the probability of a FP result. Logistic regression modeling was used to predict the probability of being FP versus TN adjusting for decade of age, race/ethnicity, family history of breast cancer, mammographic breast density, parity, prior history of biopsy, time since last screening mammogram, calendar year, availability of comparison film at interpretation, facility, and any possible interaction terms that were significant at an alpha 0.05 level. Off support probabilities were excluded and greedy matching algorithm without replacement was used to match 1-1 TN and FP mammograms (24). The matched dataset was then analyzed using Kaplan-Meier estimator to estimate the probability of returning to screening by index mammogram result. Proportional hazards modeling was used to estimate the risk of not returning to recommended screening by index mammogram result.

To estimate the probability of late stage at diagnosis following a FP or TN screening mammogram, logistic regression with generalized estimating equations (GEE) was utilized to account for clustering of screening mammograms within patients. All analyses were conducted using SAS (version 9.4; SAS Institute Inc.) All *P* values are two-sided.

IRB statement

The study was reviewed and approved by the institutional review boards at all participating institutions including the University of Illinois Chicago and Advocate Health Care facilities and departments.

Results

A total of 741,150 screening mammograms (FP = 90,918, TN = 650,232) from 261,767 women were included in this study. The overall FP rate was 12.3%. Women experiencing a FP result were less likely to have a subsequent screen in the database than women experiencing a TN result (22.1% vs. 15.0%, $P < 0.001$). Women who did not return for screening at these facilities may have forgone screening altogether (a substantively important result of this study) or may have sought subsequent screening

elsewhere (may have been lost to follow-up). Women with FP mammograms were younger, premenopausal, and were more likely to be experiencing their first mammogram screening. Also, they were more likely to be non-Hispanic black, have denser breasts, and were less likely to have a comparison film available at interpretation (Table 1).

Regardless of index screen result, younger and premenopausal women as well as women who were obtaining their first screening mammogram or whose prior mammogram occurred more than 30 months before the index screen were more likely to delay their subsequent screening (Table 2). The median delay in return to screening was higher for FP than for TN mammograms (13 months vs. 3 months, $P < 0.001$; Fig. 2). Delays in returning for subsequent screening were consistently longer after a FP mammogram than after a TN mammogram across strata of patient characteristics (Table 2).

In the adjusted proportional hazards model, women with TN result were 36% more likely to return to screening in the next 36 months compared with women with a FP result HR = 1.36 (95% CI, 1.35–1.37). In addition, a FP result was consistently associated with delays in subsequent screening within strata of patient characteristics and screening history (Table 3).

To examine whether the classification of 10,746 (1.45%) screening mammograms with BIRADS 3 as TN impacted our results we performed sensitivity analyses in which we (i) excluded screens with BIRADS 3 or (ii) included BIRADS as FP mammograms. The results in both scenarios were nearly identical to those reported when we classified mammograms with BIRADS 3 as TN.

The results after resetting the index date to account for the time required to resolve a FP mammogram were similar to the results that were observed when using the actual mammogram date as the index date. Briefly, the median delay in return to screening was higher for FP than for TN mammograms (12 months vs. 3 months, $P < 0.001$). Delays in returning for subsequent screening were consistently longer after a FP mammogram than after a TN mammogram across strata of patient characteristics. In the adjusted proportional hazards model, women with TN result were 36% more likely to return to screening compared with women with a FP result HR = 1.36 (95% CI, 1.36–1.39; data not shown).

Compared with women who did not receive additional work up, women who received additional imaging were 24% less likely to return to screening HR = 0.76 (95% CI, 0.758–0.772), and women who received imaging and biopsy were 34% less likely to

Table 1. Patient characteristics of 741,150 screening mammograms by mammogram result for the period 2001–2010

	TN N (%)	FP N (%)
Loss to follow up ^a		
Yes	97,380 (15.0)	20,073 (22.1)
No	552,852 (85.0)	70,845 (77.9)
Age		
<40	21,724 (3.34)	5,365 (5.9)
40–49	187,897 (28.9)	33,261 (36.58)
50–59	193,036 (29.69)	26,058 (28.66)
60–69	131,839 (20.28)	15,069 (16.57)
70–79	87,294 (13.43)	8,633 (9.5)
80+	28,442 (4.37)	2,532 (2.78)
Ethnicity		
nH white	362,647 (55.77)	49,319 (54.25)
nH black	151,171 (23.25)	25,121 (27.63)
Other	136,414 (20.98)	16,478 (18.13)
Breast density ^b		
Fatty	52,823 (8.12)	5,479 (6.03)
Scattered	266,089 (40.92)	31,747 (34.92)
Heterogeneous	276,742 (42.56)	45,560 (50.11)
Dense	54,512 (8.38)	7,961 (8.76)
Family history		
None	440,106 (67.68)	60,593 (66.65)
Weak	101,063 (15.54)	14,587 (16.04)
Moderate	77,450 (11.91)	10,715 (11.79)
Strong	31,613 (4.86)	5,023 (5.52)
Parity		
Nulliparous	79,395 (12.21)	11,151 (12.26)
Parous	516,967 (79.51)	69,331 (76.26)
Missing	53,870 (8.3)	10,436 (11.5)
Menopause		
Premenopausal	143,505 (22.06)	28,217 (31.04)
Postmenopausal	506,727 (77.93)	62,701 (68.96)
Prior biopsy		
Yes	114,582 (17.62)	75,164 (82.67)
No	535,650 (82.38)	15,754 (17.33)
Time since last screen		
9–18	370,815 (57.03)	37,811 (41.59)
19–30	114,806 (17.66)	13,943 (15.34)
>30	80,005 (12.3)	12,814 (14.09)
First screen	84,606 (13.01)	26,350 (28.98)
Comparison film		
Yes	540,995 (83.2)	60,746 (66.81)
No	109,237 (16.8)	30,172 (33.19)

^a% Returned to screening within 36 months.^bLog-rank test.

return to screening HR = 0.66 (95% CI, 0.64–0.67; $P_{\text{trend}} < 0.001$). Among FPs only, women who experienced additional imaging and biopsy were 19% less likely to return to screening compared with women who received imaging only HR = 1.19 (95% CI, 1.15–1.22).

We re-analyzed our primary results using propensity score matching. We matched 90,095 (99.1% of all FPs in the dataset) FP index mammograms to a similar number of true negative mammograms. The proportion of women who did not return to screening was slightly higher among women who experienced a FP mammogram compared with women with a TN exam (22.1% vs. 19.2%, $P < 0.001$). The two cohorts were balanced in terms of women's characteristics. Similar to the analysis which included all exams, delay in return to subsequent mammograms was longer among women with FP compared with women with TN mammograms. The median delay was 13 months among FP compared with 6 months among TN ($P < 0.001$). After adjusting for patient

characteristics, the chance of returning with screening was 34% higher in women with TN exams compared with women with FP mammograms HR = 1.33 (95% CI, 1.32–1.35).

For the 751,347 screening mammograms defined as either false positive or true negative, 4-year cumulative risk of a late stage at diagnosis was found to be higher following a FP mammogram compared with a TN mammogram (0.4% vs. 0.3%, for FP vs. TN respectively, $P = 0.001$, results not tabulated). Similar results were observed when adjusting for patient and clinical factors as well as clustering within patients such that the risk of late stage at diagnosis was 20% higher in FP compared with TN ($P < 0.001$). Similarly, delays in returning to subsequent screening also increased the risk of late stage at diagnosis such that the risk increases by 0.3% for every one additional month delay ($P < 0.001$, data not shown).

Discussion

We sought to examine how the experience of a FP mammogram might impact adherence to subsequent mammography screening in a large cohort of women from a single healthcare organization. Our results suggest that women who had a FP mammogram were less likely to return for screening within the following 36 months compared with those with TN mammogram results. This finding is consistent with another U.S.-based study that used secondary data from telephone interviews and medical claims records for calendar years 2005–2008 on 2,406 women which were followed for 36 months. This study found that 22.1% of women with FP mammogram compared with 15% of women with TN mammogram delayed their receipt of the subsequent screening (25). Conversely, studies conducted more than a decade ago using data from the 1990s found that women who experienced FP mammogram had better adherence to subsequent screening compared with women with a true negative mammogram exam outcome (11, 12, 26).

Several other studies from Europe and Canada found no difference in re-screening (13–16, 27), and yet others have reported lower re-screening rates among FPs than among TNs (18–20, 28–30). These inconsistent results suggest both secular and geographic variation in the impact of FP mammography on adherence to screening recommendations among the United States, Europe, and Canada (21). The conflicting results for international comparisons may be attributed to variations in screening practices such as screening intervals are shorter in the United States than in Europe, greater emphasis on accuracy in Europe by double readings which have been reported to result in 3%–5% lower recall rates compared with the United States, and differences in national mammography programs for Europe and U.S. public and private screening providers. The inconsistency between the majority of the U.S. studies and our study might be explained by secular changes in how women perceive and adapt to a FP mammogram, which may be related to changes in guidelines (USPSTF guidelines 2002 and 2009) and increased awareness of the balance of benefits and harms of mammography screening over the last decade.

Our study findings suggest that the delay in returning to recommended mammography screening practices increased the risk of subsequent diagnoses with late-stage breast cancer. A similar observation was reported from a study in the United Kingdom, which found an increased likelihood of late stage at diagnosis among women with FP compared with those with TN mammogram results OR = 1.37 (95% CI, 0.67–2.28; ref. 20).

Table 2. Mean and median delay in months for follow-up screening mammography by patient characteristics and mammogram findings

	TN			FP		
	N (% returned ^a)	Median	P ^b	N (% returned ^a)	Median	P ^b
Age, y			<0.001			<0.001
<40	21,724 (56)	28		5,365 (53)	32	
40–49	187,897 (80)	5		33,261 (70)	14	
50–59	193,036 (84)	3		26,058 (74)	12	
60–69	131,839 (86)	2		15,069 (77)	9	
70–79	87,294 (83)	2		8,633 (74)	9	
80+	28,442 (67)	4		2,532 (58)	14	
Ethnicity			<0.001			<0.001
nH white	362,647 (84)	2		49,319 (73)	12	
nH black	151,171 (84)	4		25,121 (73)	11	
Other	136,414 (72)	6		16,478 (60)	20	
Breast density ^c			<0.001			<0.001
Fatty	52,823 (79)	4		5,479 (64)	16	
Scattered	266,089 (81)	3		31,747 (72)	12	
Heterogeneous	276,742 (81)	3		45,560 (72)	12	
Dense	54,512 (81)	4		7,961 (68)	15	
Family history			<0.001			<0.001
None	440,106 (79)	4		60,593 (69)	13	
Weak	101,063 (81)	3		14,587 (74)	12	
Moderate	77,450 (81)	2		10,715 (77)	9	
Strong	31,613 (81)	2		5,023 (73)	12	
Parity			<0.001			<0.001
Nulliparous	79,395 (85)	2		11,151 (75)	12	
Parous	516,967 (83)	3		69,331 (26)	12	
Missing	53,870 (61)	11		10,436 (47)	15	
Menopause			<0.001			<0.001
Premenopausal	143,505 (68)	10		28,217 (59)	22	
Postmenopausal	506,727 (85)	3		62,701 (76)	10	
Prior biopsy			<0.001			<0.001
No	535,650 (80)	4		15,754 (70)	13	
Yes	114,582 (86)	2		75164 (77)	10	
Time since last screen			<0.001			<0.001
9–18	370,815 (89)	1		37,811 (83)	4	
19–30	114,806 (81)	6		13,943 (76)	12	
>30	80,005 (69)	13		12,814 (65)	19	
First screen	84,606 (57)	24		26,350 (53)	31	
Comparison film			<0.001			<0.001
Yes	540,995 (85)	3		60,746 (78)	8	
No	109,237 (63)	16		30,172 (44)	26	

^a% returned to screening within 36 months.^bLog-rank test.^c237 exams were missing breast density.

Some women who experience a FP result might decide to get their next screening mammogram 12 months after the completion of their diagnostic work-up, rather than 12 months after their last screen. When we adjusted the follow-up time for women with a FP screen to begin at the date of the last diagnostic procedure, our results were similar to the results generated when using the screening mammogram date as the index date. Thus, the potential for a perceived shift in the appropriate date for the next screen among women with a FP index mammogram could not account for the association of a FP result with delayed subsequent screening.

Strengths of this study include the availability of screening and diagnostic records of prior exams that were conducted within our network and the large number of exams from a diverse community-based cohort. Other studies (12, 26) have used women as the unit of analysis to estimate the probability of returning to the subsequent screening mammography, which may be subject to recall bias because of the possible differences in the accuracy of the recollection of prior exams such that women who have experienced a prior FP result may have a

better memory of their experience than women with a prior TN exam.

This study has several limitations as well. First, we could not account for insurance status in our analysis as these data were not available in our data collection system. Women who are uninsured or underinsured may be more likely to be truly lost to follow-up if they lack a medical insurance. Alternatively, underinsured women may be more likely to delay or forgo altogether subsequent screening as a result of a FP screen, perhaps due to the concern regarding high out-of-pocket costs.

In these analyses, we included the 14% of exams that were not followed by a subsequent screening mammogram within our network as right censored. It is possible that these women may have never returned to screening or could have received their mammography screening somewhere else outside our network. It is also possible that some women who appeared to delay their subsequent screen may have obtained another screen elsewhere in the interim, outside this health care organization, and thus not captured by our radiology database. This limitation may have impacted our results by differentially inflating the median follow

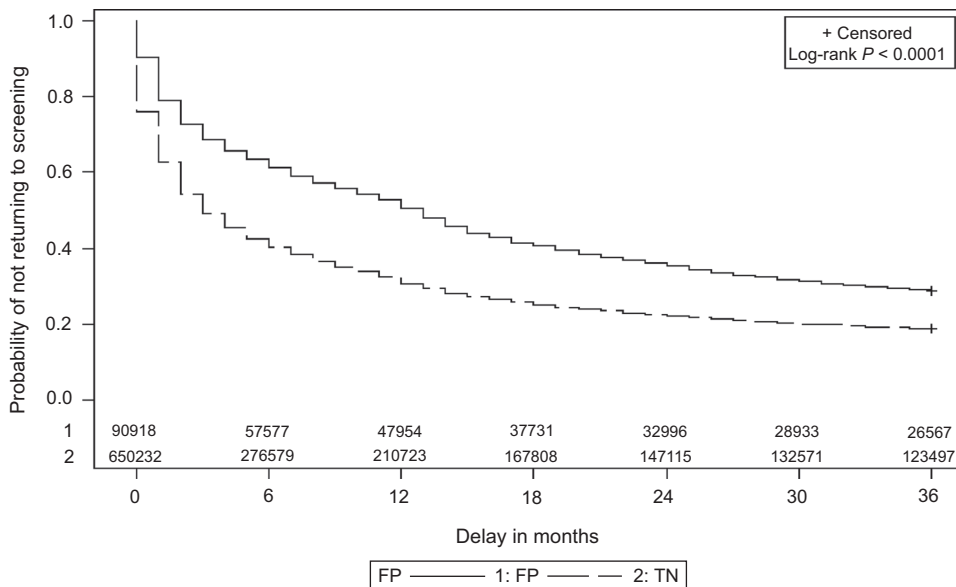


Figure 2. Kaplan-Meier estimates for time to next screen in months by index mammogram result.

up for FP and TN mammograms. When excluding those who did not have a subsequent mammogram in the system, we still observed longer median time to return to subsequent screening in women with FP compared with their TN counterparts

Table 3. Overall and stratified hazards ratios of returning to screening among true negative compared with false-positive mammograms

	HR (TN vs. FP) ^a	P
Overall	1.36 (1.35, 1.37)	<0.001
Stratum-specific		
Calendar year		
≤2005	1.31 (1.30, 1.33)	<0.001
>2005	1.4 (1.39, 1.42)	<0.001
Race/ethnicity		
nH white	1.42 (1.40, 1.43)	<0.001
nH black	1.28 (1.26, 1.30)	<0.001
Other	1.31 (1.28, 1.33)	<0.001
Age group		
<40	1.32 (1.30, 1.34)	<0.001
40–50	1.41 (1.39, 1.43)	<0.001
50–60	1.41 (1.38, 1.43)	<0.001
60–70	1.40 (1.37, 1.44)	<0.001
70–80	1.28 (1.22, 1.35)	<0.001
80+	1.03 (0.99, 1.07)	0.10
Time since screen		
First screen	1.20 (1.18, 1.23)	<0.001
09–18	1.47 (1.46, 1.49)	<0.001
19–30	1.25 (1.22, 1.27)	<0.001
>30	1.23 (1.20, 1.26)	<0.001
Family history		
None	1.34 (1.33, 1.36)	<0.001
weak	1.42 (1.38, 1.45)	<0.001
Moderate	1.46 (1.42, 1.52)	<0.001
Strong	1.3 (1.32, 1.37)	<0.001
Prior biopsy		
Yes	1.49 (1.46, 1.52)	<0.001
No	1.33 (1.32, 1.34)	<0.001
Comparison film		
Yes	1.22 (1.20, 1.24)	<0.001
No	1.41 (1.40, 1.42)	<0.001

^aCox proportional hazards model adjusted for mammogram result (FP vs. TN), decade of age, race/ethnicity, calendar year, breast density, family history, time since last screen, history of prior biopsy, parity, availability of comparison film, and screening facility.

(7 months vs. 2 months, $P < 0.001$). Similar finding was also observed after resetting the index date to account for the time required to resolve a FP mammogram. Given the high percentage (86%) of index screens were associated with a subsequent screen, loss to follow-up would appear to be modest, but this is could not be determined empirically.

In conclusion, our study found that women who experienced a FP mammogram were more likely to delay their subsequent screening compared with women with a TN mammogram. The finding is important in that women who experience a FP mammogram result should be provided with more information about the continued benefits of mammography screening and encouraged to maintain adherence to screening mammography recommendations.

Disclosure of Potential Conflicts of Interest

S.M. Friedewald reports receiving a commercial research grant from Hologic, is a consultant/advisory board member for Bard and Hologic, and has provided expert testimony. No potential conflicts of interest were disclosed by the other authors.

Authors' Contributions

Conception and design: F.M. Dabbous, W.T. Summerfelt, G.H. Rauscher
Development of methodology: F.M. Dabbous, M.L. Berbaum, W.T. Summerfelt, G.H. Rauscher
Acquisition of data (provided animals, acquired and managed patients, provided facilities, etc.): T.A. Dolecek, W.T. Summerfelt, G.H. Rauscher
Analysis and interpretation of data (e.g., statistical analysis, biostatistics, computational analysis): F.M. Dabbous, M.L. Berbaum, W.T. Summerfelt
Writing, review, and/or revision of the manuscript: F.M. Dabbous, T.A. Dolecek, M.L. Berbaum, S.M. Friedewald, W.T. Summerfelt, K. Hoskins, G.H. Rauscher
Administrative, technical, or material support (i.e., reporting or organizing data, constructing databases): F.M. Dabbous, T.A. Dolecek, W.T. Summerfelt
Study supervision: F.M. Dabbous, G.H. Rauscher
Other (I served on the first author's dissertation committee and thus had a degree of input on all aspects of the design and conduct of the study. The items checked are those where my input was greatest.): M.L. Berbaum

Acknowledgments

We thank the Illinois women diagnosed with breast cancer whose information was reported to the Illinois State Cancer Registry, thereby making this

research possible. The conclusions, opinions, and recommendations expressed are not necessarily the conclusions, opinions, or recommendations of the Illinois State Cancer Registry.

Grant Support

This work was supported by a grant from the Agency for Health Research and Quality to G.H. Rauscher from the University of Illinois at Chicago (Grant #1 R01 HS018366-01A1). Dr. S.M. Friedewald have received grand funding for

research from Hologic and she is an occasional consultant for Hologic. She is on the speakers' bureau for Bard. No other potential conflict of interest to disclose.

The costs of publication of this article were defrayed in part by the payment of page charges. This article must therefore be hereby marked *advertisement* in accordance with 18 U.S.C. Section 1734 solely to indicate this fact.

Received June 27, 2016; revised October 20, 2016; accepted October 21, 2016; published OnlineFirst February 9, 2017.

References

- Berry DA, Cronin KA, Plevritis SK, Fryback DG, Clarke L, Zelen M, et al. Effect of screening and adjuvant therapy on mortality from breast cancer. *N Engl J Med* 2005;353:1784–92.
- Chubak J, Boudreau DM, Fishman PA, Elmore JG. Cost of breast-related care in the year following false positive screening mammograms. *Med Care* 2010;48:815–20.
- Brodersen J, Siersma VD. Long-term psychosocial consequences of false-positive screening mammography. *Ann Fam Med* 2013;11:106–15.
- Brett J, Bankhead C, Henderson B, Watson E, Austoker J. The psychological impact of mammographic screening. A systematic review. *Psychooncology* 2005;14:917–38.
- Kerlikowske K, Hubbard RA, Miglioretti DL, Geller BM, Yankaskas BC, Lehman CD, et al. Comparative effectiveness of digital versus film-screen mammography in community practice in the United States: a cohort study. *Ann Intern Med* 2011;155:493–502.
- Mushlin AI, Kouides RW, Shapiro DE. Estimating the accuracy of screening mammography: a meta-analysis. *Am J Prev Med* 1998;14:143–53.
- Rosenberg RD, Yankaskas BC, Abraham LA, Sickles EA, Lehman CD, Geller BM, et al. Performance benchmarks for screening mammography. *Radiology* 2006;241:55–66.
- Gotzsche PC, Jorgensen KJ. Screening for breast cancer with mammography. *Cochrane Database Syst Rev* 2013;6:CD001877.
- Woloshin S, Schwartz LM. The benefits and harms of mammography screening: understanding the trade-offs. *JAMA* 2010;303:164–5.
- US Preventive Services Task Force. Screening for breast cancer: U.S. Preventive Services Task Force recommendation statement. *Ann Intern Med* 2009;151:716,26, W-236.
- Lipkus IM, Halabi S, Strigo TS, Rimer BK. The impact of abnormal mammograms on psychosocial outcomes and subsequent screening. *Psychooncology* 2000;9:402–10.
- Pinckney RG, Geller BM, Burman M, Littenberg B. Effect of false-positive mammograms on return for subsequent screening mammography. *Am J Med* 2003;114:120–5.
- Lerman C, Trock B, Rimer BK, Boyce A, Jepson C, Engstrom PF. Psychological and behavioral implications of abnormal mammograms. *Ann Intern Med* 1991;114:657–61.
- Pisano ED, Earp J, Schell M, Vokaty K, Denham A. Screening behavior of women after a false-positive mammogram. *Radiology* 1998;208:245–9.
- O'Sullivan I, Sutton S, Dixon S, Perry N. False positive results do not have a negative effect on reattendance for subsequent breast screening. *J Med Screen* 2001;8:145–8.
- Andersen SB, Vejborg I, von Euler-Chelpin M. Participation behaviour following a false positive test in the Copenhagen mammography screening programme. *Acta Oncol* 2008;47:550–5.
- Hofvind SS, Wang H, Thoresen S. The Norwegian Breast Cancer Screening Program: re-attendance related to the women's experiences, intentions and previous screening result. *Cancer Causes Control* 2003;14:391–8.
- Chiarelli AM, Moravan V, Halapy E, Majpruz V, Mai V, Tatla RK. False-positive result and reattendance in the Ontario Breast Screening Program. *J Med Screen* 2003;10:129–33.
- Brett J, Austoker J. Women who are recalled for further investigation for breast screening: psychological consequences 3 years after recall and factors affecting re-attendance. *J Public Health Med* 2001;23:292–300.
- McCann J, Stockton D, Godward S. Impact of false-positive mammography on subsequent screening attendance and risk of cancer. *Breast Cancer Res* 2002;4:R11.
- Brewer NT, Salz T, Lillie SE. Systematic review: the long-term effects of false-positive mammograms. *Ann Intern Med* 2007;146:502–10.
- PENRAD Imaging: Colorado Springs Radiologists: Diagnostic Imaging Colorado PenRad Imaging [Internet]. Colorado Springs: Technologies of Plymouth, MN; 2015. Available from: <http://www.penrad.com/>.
- Illinois State Cancer Registry, public dataset, 1986–2012 [Internet]: Illinois Department of Public Health; 2014. Available from: <http://www.idph.state.il.us/cancer/statistics.htm>.
- Parsons LS. Reducing bias in a propensity score matched-pair sample using Greedy matching techniques. In: Proceedings of the Twenty-Sixth Annual SAS Users Group International Conference; 2001 Apr 22–25; Long Beach, CA; Cary, NC: SAS Institute; 2001.
- DeFrank JT, Rimer BK, Bowling JM, Earp JA, Breslau ES, Brewer NT. Influence of false-positive mammography results on subsequent screening: do physician recommendations buffer negative effects? *J Med Screen* 2012; 19:35–41.
- Burman ML, Taplin SH, Herta DF, Elmore JG. Effect of false-positive mammograms on interval breast cancer screening in a health maintenance organization. *Ann Intern Med* 1999;131:1–6.
- Lampic C, Thurffjell E, Sjoden PO. The influence of a false-positive mammogram on a woman's subsequent behaviour for detecting breast cancer. *Eur J Cancer* 2003;39:1730–7.
- Hofvind S, Ursin G, Tretli S, Sebuodegard S, Moller B. Breast cancer mortality in participants of the Norwegian Breast Cancer Screening Program. *Cancer* 2013;119:3106–12.
- Alamo-Junquera D, Murta-Nascimento C, Macia F, Bare M, Galceran J, Ascunce N, et al. Effect of false-positive results on reattendance at breast cancer screening programmes in Spain. *Eur J Public Health* 2012;22:404–8.
- Roman R, Sala M, De La Vega M, Natal C, Galceran J, Gonzalez-Roman I, et al. Effect of false-positives and women's characteristics on long-term adherence to breast cancer screening. *Breast Cancer Res Treat* 2011;130: 543–52.

Cancer Epidemiology, Biomarkers & Prevention

AACR American Association
for Cancer Research

Impact of a False-Positive Screening Mammogram on Subsequent Screening Behavior and Stage at Breast Cancer Diagnosis

Firas M. Dabbous, Therese A. Dolecek, Michael L. Berbaum, et al.

Cancer Epidemiol Biomarkers Prev Published OnlineFirst February 9, 2017.

Updated version Access the most recent version of this article at:
doi:[10.1158/1055-9965.EPI-16-0524](https://doi.org/10.1158/1055-9965.EPI-16-0524)

E-mail alerts [Sign up to receive free email-alerts](#) related to this article or journal.

Reprints and Subscriptions To order reprints of this article or to subscribe to the journal, contact the AACR Publications Department at pubs@aacr.org.

Permissions To request permission to re-use all or part of this article, use this link <http://cebp.aacrjournals.org/content/early/2017/02/06/1055-9965.EPI-16-0524>. Click on "Request Permissions" which will take you to the Copyright Clearance Center's (CCC) Rightslink site.