

CANCER EPIDEMIOLOGY,
BIOMARKERS & PREVENTION

TABLE OF CONTENTS

HIGHLIGHTS

1453 Selected Articles from This Issue

COMMENTARIES

1455 **Anti-Asian American Racism: A Wake-Up Call for Population-Based Cancer Research**
Edward Christopher Dee, Sophia Chen, Patricia Mae Garcia Santos, Shirley Z. Wu, Iona Cheng, and Scarlett Lin Gomez

1459 **Looking for Proof in the Wrong Generation?**
Suzanne E. Fenton and Abee L. Boyles
See related article, p. 1480

REVIEW

1462 **Cigarette Smoking and Estrogen-Related Cancer**
John A. Baron, Hazel B. Nichols, Chelsea Anderson, and Stephen Safe

CANCER SURVEILLANCE RESEARCH

1472 **Characteristics and Outcomes of Lung Cancers Detected on Low-Dose Lung Cancer Screening CT**
Eric W. Zhang, Jo-Anne O. Shepard, Anderson Kuo, Wariya Chintanapakdee, Florence Keane, Justin F. Gainor, Mari Mino-Kenudson, Michael Lanuti, Inga T. Lennes, and Subba R. Digumarthy

RESEARCH ARTICLES

1480 **Grandmaternal Perinatal Serum DDT in Relation to Granddaughter Early Menarche and Adult Obesity: Three Generations in the Child Health and Development Studies Cohort**
Piera M. Cirillo, Michele A. La Merrill, Nickilou Y. Krigbaum, and Barbara A. Cohn
See related commentary, p. 1459

1489 **The Inverse Association of Body Mass Index with Lung Cancer: Exploring Residual Confounding, Metabolic Aberrations and Within-Person Variability in Smoking**
Angela M. Wood, Håkan Jonsson, Gabriele Nagel, Christel Häggström, Jonas Manjer, Hanno Ulmer, Anders Engeland, Emanuel Zitt, Sylvia H.J. Jochems, Sara Ghaderi, Pär Stattin, Tone Bjørge, and Tanja Stocks

1498 **The Association between Polluted Neighborhoods and TP53-Mutated Non-Small Cell Lung Cancer**
Loretta Erhunmwunsee, Sam E. Wing, Jenny Shen, Hengrui Hu, Ernesto Sosa, Lisa N. Lopez, Catherine Raquel, Melissa Sur, Pilar Ibarra-Noriega, Madeline Currey, Janet Lee, Jae Y. Kim, Dan J. Raz, Arya Amini, Sagus Sampath, Marianna Koczywas, Erminia Massarelli, Howard L. West, Karen L. Reckamp, Rick A. Kittles, Ravi Salgia, Victoria L. Seewaldt, Susan L. Neuhausen, and Stacy W. Gray

1506 **Integrating Electronic Health Record, Cancer Registry, and Geospatial Data to Study Lung Cancer in Asian American, Native Hawaiian, and Pacific Islander Ethnic Groups**
Mindy C. DeRouen, Caroline A. Thompson, Alison J. Canchola, Anqi Jin, Sixiang Nie, Carmen Wong, Jennifer Jain, Daphne Y. Lichtensztajn, Yuqing Li, Laura Allen, Manali I. Patel, Yihe G. Daida, Harold S. Luft, Salma Shariff-Marco, Peggy Reynolds, Heather A. Wakelee, Su-Ying Liang, Beth E. Waitzfelder, Iona Cheng, and Scarlett L. Gomez

1517 **Epigenetic Biomarkers of Prenatal Tobacco Smoke Exposure Are Associated with Gene Deletions in Childhood Acute Lymphoblastic Leukemia**
Keren Xu, Shaobo Li, Todd P. Whitehead, Priyatama Pandey, Alice Y. Kang, Libby M. Morimoto, Scott C. Kogan, Catherine Metayer, Joseph L. Wiemels, and Adam J. de Smith

1526 **Cytokine Levels at Birth in Children Who Developed Acute Lymphoblastic Leukemia**
Todd P. Whitehead, Joseph L. Wiemels, Mi Zhou, Alice Y. Kang, Lucie S. McCoy, Rong Wang, Briana Fitch, Lauren M. Petrick, Yukiko Yano, Partow Imani, Stephen M. Rappaport, Gary V. Dahl, Scott C. Kogan, Xiaomei Ma, and Catherine Metayer

TABLE OF CONTENTS

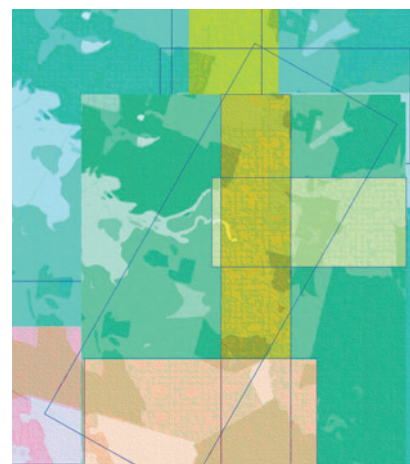
- 1536** **Longitudinal Evaluation of Neuromuscular Dysfunction in Long-term Survivors of Childhood Cancer: A Report from the Childhood Cancer Survivor Study**
Rozalyn L. Rodwin, Yan Chen, Yutaka Yasui, Wendy M. Leisenring, Todd M. Gibson, Paul C. Nathan, Rebecca M. Howell, Kevin R. Krull, Caroline Mohrmann, Robert J. Hayashi, Eric J. Chow, Kevin C. Oeffinger, Gregory T. Armstrong, Kirsten K. Ness, and Nina S. Kadan-Lottick
- 1546** **Disentangling Racial, Ethnic, and Socioeconomic Disparities in Treatment for Colorectal Cancer**
Chelsea A. Obrochta, James D. Murphy, Ming-Hsiang Tsou, and Caroline A. Thompson
- 1554** **Screening for Colorectal Cancer in the United States: Correlates and Time Trends by Type of Test**
Jean A. Shapiro, Ashwini V. Soman, Zahava Berkowitz, Stacey A. Fedewa, Susan A. Sabatino, Janet S. de Moor, Tainya C. Clarke, V. Paul Doria-Rose, Erica S. Breslau, Ahmedin Jemal, and Marion R. Nadel
- 1566** **The Future Burden of Head and Neck Cancers Attributable to Modifiable Behaviors in Australia: A Pooled Cohort Study**
Maarit A. Laaksonen, Karen Canfell, Robert J. MacInnis, Emily Banks, Julie E. Byles, Graham G. Giles, Dianna J. Magliano, Jonathan E. Shaw, Vasant Hirani, Tiffany K. Gill, Paul Mitchell, Robert G. Cumming, Usha Salagame, and Claire M. Vajdic
- 1575** **Prediagnostic White Blood Cell DNA Methylation and Risk of Breast Cancer in the Prostate Lung, Colorectal, and Ovarian Cancer Screening Trial (PLCO) Cohort**
Susan R. Sturgeon, David A. Sela, Eva P. Browne, Jonah Einson, Asha Rani, Mohamed Halabi, Thomas Kania, Andrew Keezer, Raji Balasubramanian, Regina G. Ziegler, Catherine Schairer, Karl T. Kelsey, and Kathleen F. Arcaro
- 1582** **Function-related Indicators and Outcomes of Screening Mammography in Older Women: Evidence from the Breast Cancer Surveillance Consortium Cohort**
Dongyu Zhang, Linn Abraham, Joshua Demb, Diana L. Miglioretti, Shailesh Advani, Brian L. Sprague, Louise M. Henderson, Tracy Onega, Karen J. Wernli, Louise C. Walter, Karla Kerlikowske, John T. Schousboe, Ellen S. O'Meara, and Dejana Braithwaite; for the Breast Cancer Surveillance Consortium
- 1591** **Polyunsaturated Fatty Acid Levels and the Risk of Keratinocyte Cancer: A Mendelian Randomization Analysis**
AC Mathias Seviiri, Matthew H. Law, Jue Sheng Ong, Puya Gharahkhani, Dale R. Nyholt, Catherine M. Olsen, David C. Whiteman, and Stuart MacGregor

AC icon indicates AuthorChoice

For more information please visit www.aacrjournals.org

ABOUT THE COVER

The cover image is adapted from Figure 4 in the article “Integrating Electronic Health Record, Cancer Registry, and Geospatial Data to Study Lung Cancer in Asian American, Native Hawaiian and Pacific Islander Ethnic Groups,” by DeRouen and colleagues. The figure shows the approach to categorization of detailed race/ethnicity and multi-racial/ethnic groups. A relatively high proportion of Asian American, Native Hawaiian, and Pacific Islander (AANHPI) females with lung cancer have never smoked. The study of lung cancer among AANHPI females who have never smoked has been hindered by the lack of a sufficiently large and representative data source to document population-level incidence rates of lung cancer stratified by sex, detailed race/ethnicity, and smoking status. Integrative data analysis, which combines data from multiple sources to enrich the number of observations or data on explanatory variables, takes advantage of existing resources (e.g., health care data) to examine rare diseases among “small populations” of interest, like AANHPI ethnic groups. The authors assembled a large-scale, multilevel electronic health record (EHR)-based cohort to facilitate research on the incidence and etiology of lung cancer among specific AANHPI ethnic groups. The cohort comprises males and females of any race/ethnicity but is designed specifically to quantify the burden of lung cancer among detailed single- and multi-racial/ethnic AANHPI groups. This diverse, multilevel dataset will allow for much-needed research on lung cancer risk, especially among AANHPI female never-smokers, and serve as a critical evidence base to inform screening, research, and public health priorities in this growing population. For more information, see the article beginning on page 1506.



Cancer Epidemiology, Biomarkers & Prevention

30 (8)

Cancer Epidemiol Biomarkers Prev 2021;30:1453-1598.

Updated version Access the most recent version of this article at:
<http://cebp.aacrjournals.org/content/30/8>

E-mail alerts [Sign up to receive free email-alerts](#) related to this article or journal.

Reprints and Subscriptions To order reprints of this article or to subscribe to the journal, contact the AACR Publications Department at pubs@aacr.org.

Permissions To request permission to re-use all or part of this article, use this link <http://cebp.aacrjournals.org/content/30/8>. Click on "Request Permissions" which will take you to the Copyright Clearance Center's (CCC) Rightslink site.