

CANCER EPIDEMIOLOGY,  
BIOMARKERS & PREVENTION

# TABLE OF CONTENTS

## HIGHLIGHTS

- 243 Selected Articles from This Issue

## COMMENTARIES

- 245 **Will COVID-19 Be the Tipping Point for Primary HPV Self-sampling?**  
Anita W.W. Lim  
See related article, p. 268
- 248 **Esophageal Cancer in Tanzania: A Welcome Stimulus in Primary Prevention Research**  
Valerie McCormack, Bongani Kaimila, Blandina T. Mmbaga, and Joachim Schüz  
See related article, p. 305
- 252 **Diet and Prognosis in Women with Breast Cancer**  
Anne McTiernan  
See related article, p. 335
- 255 **Why Do Epidemiologic Studies Find an Inverse Association Between Intraprostatic Inflammation and Prostate Cancer: A Possible Role for Colliding Bias?**  
Marvin E. Langston, Karen S. Sfanos, Saira Khan, Trang Q. Nguyen, Angelo M. De Marzo, Elizabeth A. Platz, and Siobhan Sutcliffe

## RESEARCH ARTICLES

- 260 **Dissemination and Implementation Research at the National Cancer Institute: A Review of Funded Studies (2006–2019) and Opportunities to Advance the Field**  
Gila Neta, Mindy Clyne, and David A. Chambers
- 268 **Could HPV Testing on Self-collected Samples Be Routinely Used in an Organized Cervical Screening Program? A Modeled Analysis**  
Megan A. Smith, Michaela T. Hall, Marion Saville, Julia M.L. Brotherton, Kate T. Simms, Jie-Bin Lew, Deborah Bateson, S. Rachel Skinner, Margaret Kelaher, and Karen Canfell  
See related commentary, p. 245

- 278 **Provider Discussion about Lifestyle by Cancer History: A Nationally Representative Survey**  
Hannah Arem, Xuejing Duan, Diane K. Ehlers, Maureen E. Lyon, Julia H. Rowland, and Scherezade K. Mama
- 286 **The Contribution of Stress and Distress to Cardiovascular Health in Adult Survivors of Childhood Cancer**  
Margaret M. Lubas, Mingjuan Wang, John L. Jefferies, Kirsten K. Ness, Matthew J. Ehrhardt, Kevin R. Krull, Daniel A. Mulrooney, Deo Kumar Srivastava, Rebecca M. Howell, Leslie L. Robison, Melissa M. Hudson, Gregory T. Armstrong, and Tara M. Brinkman
- 295 **Obstructive Sleep Apnea and Incident Cancer: A Large Retrospective Multicenter Clinical Cohort Study**  
Tetyana Kendzerska, Marcus Povitz, Richard S. Leung, Mark I. Boulos, Daniel I. McIsaac, Brian J. Murray, Gregory L. Bryson, Robert Talarico, John F. Hilton, Atul Malhotra, and Andrea S. Gershon
- 305 **A Case–Control Study to Evaluate Environmental and Lifestyle Risk Factors for Esophageal Cancer in Tanzania**  
Elia J. Mmbaga, Beatrice P. Mushi, Katrina Deardorff, William Mgisha, Larry O. Akoko, Alan Paciorek, Robert A. Hiatt, Geoffrey C. Buckle, Julius Mwaiselage, Li Zhang, and Katherine Van Loon  
See related commentary, p. 248
- 317 **Additive Effects of Arsenic and Aristolochic Acid in Chemical Carcinogenesis of Upper Urinary Tract Urothelium**  
Chung-Hsin Chen, Arthur P. Grollman, Chao-Yuan Huang, Chia-Tung Shun, Viktoriya S. Sidorenko, Keiji Hashimoto, Masaaki Moriya, Robert J. Turesky, Byeong Hwa Yun, Karen Tsai, Stephanie Wu, Po-Ya Chuang, Chao-Hsiun Tang, Wen-Horng Yang, Tzong-Shin Tzai, Yuh-Shyan Tsai, Kathleen G. Dickman, and Yeong-Shiau Pu
- 326 **Conditional Relative Survival and Competing Mortality of Patients with Prostate Cancer in Korea: A Nationwide Cohort Study**  
Jinsung Park, Kyungdo Han, Dong Wook Shin, Sang Hyun Park, and Hyun Bin Shin

# TABLE OF CONTENTS

- 335 Postdiagnostic Dietary Glycemic Index, Glycemic Load, Dietary Insulin Index, and Insulin Load and Breast Cancer Survival**  
Maryam S. Farvid, Rulla M. Tamimi, Elizabeth M. Poole, Wendy Y. Chen, Bernard A. Rosner, Walter C. Willett, Michelle D. Holmes, and A. Heather Eliassen  
See related commentary, p. 252
- 344 Neighborhood Social Environmental Factors and Breast Cancer Subtypes among Black Women**  
Bo Qin, Riddhi A. Babel, Jesse J. Plascak, Yong Lin, Antoinette M. Stroup, Noreen Goldman, Christine B. Ambrosone, Kitaw Demissie, Chi-Chen Hong, Elisa V. Bandera, and Adana A.M. Llanos
- 351 Racial/Ethnic Disparities in Survival after Breast Cancer Diagnosis by Estrogen and Progesterone Receptor Status: A Pooled Analysis**  
Esther M. John, Valerie McGuire, Allison W. Kurian, Jocelyn Koo, Salma Shariff-Marco, Scarlett Lin Gomez, Iona Cheng, Theresa H.M. Keegan, Marilyn L. Kwan, Leslie Bernstein, Cheryl Vigen, and Anna H. Wu
- 364 Occupational Heat Exposure and Breast Cancer Risk in the MCC-Spain Study**  
**AC** Alice Hinchliffe, Manolis Kogevinas, Beatriz Pérez-Gómez, Eva Ardanaz, Pilar Amiano, Alba Marcos-Delgado, Gemma Castaño-Vinyals, Javier Llorca, Víctor Moreno, Juan Alguacil, Guillermo Fernandez-Tardón, Dolores Salas, Rafael Marcos-Gragera, Nuria Aragonés, Marcela Guevara, Leire Gil, Vicente Martin, Yolanda Benavente, Ines Gomez-Acebo, Miguel Santibáñez, Miguel Ángel Alba, Ana M. García, Marina Pollán, and Michelle C. Turner
- 373 Latent Class Trajectory Modeling of Adult Body Mass Index and Risk of Obesity-Related Cancer: Findings from the Melbourne Collaborative Cohort Study**  
Yi Yang, Brigid M. Lynch, Pierre-Antoine Dugué, Amalia Karahalios, Robert J. MacInnis, Julie K. Bassett, Alison McAleese, Craig Sinclair, Graham G. Giles, Roger L. Milne, Allison M. Hodge, and Dallas R. English
- 380 Composite Score of Healthy Lifestyle Factors and Risk of Hepatocellular Carcinoma: Findings from a Prospective Cohort Study**  
Hung N. Luu, Jaideep Behari, George Boon-Bee Goh, Renwei Wang, Aizhen Jin, Claire E. Thomas, Jose C. Clemente, Andrew O. Odegaard, Woon-Puay Koh, and Jian-Min Yuan
- 388 Serum IL27 in Relation to Risk of Hepatocellular Carcinoma in Two Nested Case-Control Studies**  
Jian-Min Yuan, Yue Wang, Renwei Wang, Hung N. Luu, Jennifer Adams-Haduch, Woon-Puay Koh, Yu-Tang Gao, Jaideep Behari, and Michael T. Lotze
- 396 The Role of Gallstones in Gallbladder Cancer in India: A Mendelian Randomization Study**  
**AC** Sharayu Mhatre, Rebecca C. Richmond, Nilanjan Chatterjee, Preetha Rajaraman, Zhaoming Wang, Haoyu Zhang, Rajendra Badwe, Mahesh Goel, Shraddha Patkar, Shailesh V. Shrikhande, Prachi S. Patil, George Davey Smith, Caroline L. Relton, and Rajesh P. Dikshit
- 404 Genetic Predictors of Severe Skin Toxicity in Patients with Stage III Colon Cancer Treated with Cetuximab: NCCTG N0147 (Alliance)**  
Julia D. Labadie, Xinwei Hua, Tabitha A. Harrison, Barbara L. Banbury, Jeroen R. Huyghe, Wei Sun, Qian Shi, Greg Yothers, Steven R. Alberts, Frank A. Sinicropo, Richard M. Goldberg, Thomas J. George, Kathryn L. Penney, Amanda I. Phipps, Stacey A. Cohen, Ulrike Peters, Andrew T. Chan, and Polly A. Newcomb
- 412 Gastrointestinal Cancer Survival and Radiation Exposure among Atomic Bomb Survivors: The Life Span Study**  
Brandie Bockwoldt, Hiromi Sugiyama, Kevin Tsai, Parveen Bhatti, Alina V. Brenner, Audrey Hu, Kathleen F. Kerr, Eric Morenz, Benjamin French, and Amanda I. Phipps

## NULL RESULTS IN BRIEF

- 419 Phosphodiesterase 5 Inhibitor Use and Risk of Conventional and Serrated Precursors of Colorectal Cancer**  
Yiwen Zhang, Chun-Han Lo, and Edward L. Giovannucci
- 422 Association Between Serum Iron Biomarkers and Breast Cancer**  
Ann Von Holle, Katie M. O'Brien, Dale P. Sandler, Robert Janicek, and Clarice R. Weinberg

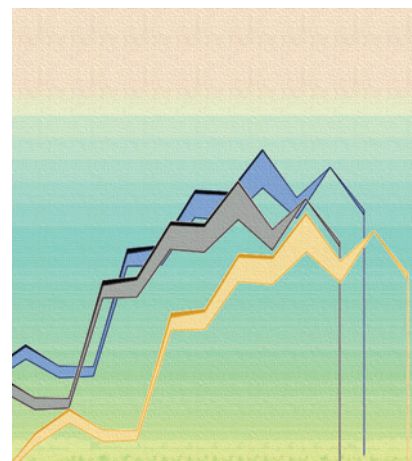
**AC** AC icon indicates AuthorChoice

For more information please visit [www.aacrjournals.org](http://www.aacrjournals.org)

# TABLE OF CONTENTS

## ABOUT THE COVER

The cover image is adapted from Figure 1 in the article “Dissemination and Implementation Research at the National Cancer Institute: A Review of Funded Studies (2006–2019) and Opportunities to Advance the Field,” by Neta and colleagues. To ensure investment in cancer research reaches populations who can benefit, the National Cancer Institute (NCI) has funded implementation science grants since the Dissemination and Implementation Research in Health (DIRH) funding opportunities launched in 2006. The authors analyzed NCI-funded DIRH grants to provide a snapshot of implementation science conducted across the cancer care continuum and highlight areas ripe for exploration. The figure shows Funding trends of National Cancer Institute-funded grants through the Dissemination and Implementation in Health program announcements by funding mechanism for fiscal years 2006–2019. Current funding suggests researchers are studying implementation of cancer control interventions across the care continuum. However, research gaps remain in strategies for sustainability, scale-up, and de-implementation. More emphasis is needed on cancer treatment and survivorship. Additional focus on policy implementation and measure development is warranted. For more information, see the article beginning on page 260.



# Cancer Epidemiology, Biomarkers & Prevention

AACR American Association  
for Cancer Research

30 (2)

*Cancer Epidemiol Biomarkers Prev* 2021;30:243-425.

**Updated version** Access the most recent version of this article at:  
<http://cebp.aacrjournals.org/content/30/2>

**E-mail alerts** [Sign up to receive free email-alerts](#) related to this article or journal.

**Reprints and Subscriptions** To order reprints of this article or to subscribe to the journal, contact the AACR Publications Department at [pubs@aacr.org](mailto:pubs@aacr.org).

**Permissions** To request permission to re-use all or part of this article, use this link <http://cebp.aacrjournals.org/content/30/2>. Click on "Request Permissions" which will take you to the Copyright Clearance Center's (CCC) Rightslink site.