

CANCER EPIDEMIOLOGY,
BIOMARKERS & PREVENTION

TABLE OF CONTENTS

HIGHLIGHTS

- 525 Selected Articles from This Issue

REVIEWS

- 527 **Association of Serum Immunoglobulin Levels with Solid Cancer: A Systematic Review and Meta-analysis**
Ioannis Peppas, Gincy George, Sam Sollie, Debra H. Josephs, Niklas Hammar, Göran Walldius, Sophia N. Karagiannis, and Mieke Van Hemelrijck
- 539 ***Fusobacterium nucleatum* in the Colorectum and Its Association with Cancer Risk and Survival: A Systematic Review and Meta-analysis**
Christian Gethings-Behncke, Helen G. Coleman, Haydee W.T. Jordao, Daniel B. Longley, Nyrree Crawford, Liam J. Murray, and Andrew T. Kunzmann

RESEARCH ARTICLES

- 549 **A New Comprehensive Colorectal Cancer Risk Prediction Model Incorporating Family History, Personal Characteristics, and Environmental Factors**
Yingye Zheng, Xinwei Hua, Aung K. Win, Robert J. MacInnis, Steven Gallinger, Loic Le Marchand, Noralane M. Lindor, John A. Baron, John L. Hopper, James G. Dowty, Antonis C. Antoniou, Jiayin Zheng, Mark A. Jenkins, and Polly A. Newcomb
- 558 **Risk of Leukemia after Dengue Virus Infection: A Population-Based Cohort Study**
Yu-Wen Chien, Chia-Chun Wang, Yu-Ping Wang, Cho-Yin Lee, and Guey Chuen Perng
- 565 **Nut Consumption and Risk of Cancer: A Meta-analysis of Prospective Studies**
Jieyi Long, Zhi Ji, Peihong Yuan, Tingting Long, Ke Liu, Jiaoyuan Li, and Liming Cheng
- 574 **Inclusion of Endogenous Plasma Dehydroepiandrosterone Sulfate and Mammographic Density in Risk Prediction Models for Breast Cancer**
Marika Gabrielson, Kumari A. Ubhayasekera, Santosh R. Acharya, Mikael Andersson Franko, Mikael Eriksson, Jonas Bergquist, Kamila Czene, and Per Hall

- 582 **Metabolic Pathway Analysis and Effectiveness of Tamoxifen in Danish Breast Cancer Patients**
Thomas P. Ahern, Lindsay J. Collin, James W. Baurley, Anders Kjærsgaard, Rebecca Nash, Maret L. Maliniak, Per Damkier, Michael E. Zwick, R. Benjamin Isett, Peer M. Christiansen, Bent Ejlersen, Kristina L. Lauridsen, Kristina B. Christensen, Rebecca A. Silliman, Henrik Toft Sørensen, Trine Tramm, Stephen Hamilton-Dutoit, Timothy L. Lash, and Deirdre Cronin-Fenton
- 591 **Association of Diet Quality and Physical Activity on Obesity-Related Cancer Risk and Mortality in Black Women: Results from the Women's Health Initiative**
Joy J. Chebet, Cynthia A. Thomson, Lindsay N. Kohler, John E. Ehiri, Juhua Luo, Ting-Yuan David Cheng, Kathy Pan, Rowan T. Chlebowski, Rami Nassir, Shawnita Sealy-Jefferson, JoAnn E. Manson, Nazmus Saquib, and Melanie L. Bell
- 599 **The Association of Modifiable Breast Cancer Risk Factors and Somatic Genomic Alterations in Breast Tumors: The Cancer Genome Atlas Network**
Yujing J. Heng, Susan E. Hankinson, Jun Wang, Ludmil B. Alexandrov, Christine B. Ambrosone, Victor P. de Andrade, Adam M. Brufsky, Fergus J. Couch, Tari A. King, Francesmary Modugno, Celine M. Vachon, A. Heather Eliassen, Rulla M. Tamimi, and Peter Kraft
- 606 **Participant-Centered Strategies for Overcoming Barriers to Biospecimen Collection among Spanish-Speaking Latina Breast Cancer Survivors**
Cathy Samayoa, Jasmine Santoyo-Olsson, Cristian Escalera, Anita L. Stewart, Carmen Ortiz, Leticia Márquez-Magaña, Aday Urias, Nayeli Gonzalez, Silvia A. Cervantes, Alma Torres-Nguyen, Lorenia Parada-Ampudia, and Anna M. Nápoles
- 616 **Insurance Coverage, Employment Status, and Financial Well-Being of Young Women Diagnosed with Breast Cancer**
Florence K.L. Tangka, Sujha Subramanian, Madeleine Jones, Patrick Edwards, Timothy Flanigan, Yevgeniya Kaganova, Kevin W. Smith, Cheryl C. Thomas, Nikki A. Hawkins, Juan Rodriguez, Temeika Fairley, and Gery P. Guy

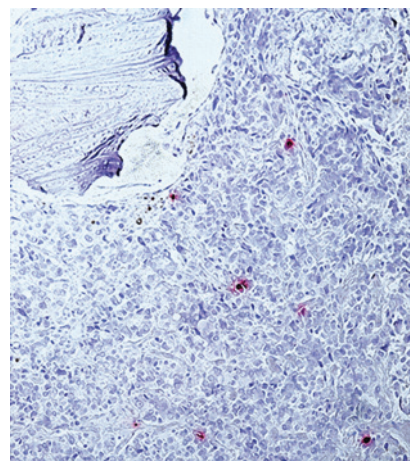
TABLE OF CONTENTS

- 625** **Temporal Trends in Population-Level Cure of Cancer: The Australian Context**
Kou Kou, Paramita Dasgupta, Susanna M. Cramb, Xue Qin Yu, and Peter D. Baade
- 636** **Association of Anti-Mullerian Hormone, Follicle-Stimulating Hormone, and Inhibin B with Risk of Ovarian Cancer in the Janus Serum Bank**
Sarah R. Irvin, Elisabete Weiderpass, Frank Z. Stanczyk, Louise A. Brinton, Britton Trabert, Hilde Langseth, and Nicolas Wentzensen
- 643** **Mouth-Level Nicotine Intake Estimates from Discarded Filter Butts to Examine Compensatory Smoking in Low Nicotine Cigarettes**
Tracy T. Smith, Joseph S. Koopmeiners, Dorothy K. Hatsukami, Katelyn M. Tessier, Neal L. Benowitz, Sharon E. Murphy, Andrew A. Strasser, Jennifer W. Tidey, Benjamin C. Blount, Liza Valentin, Roberto Bravo Cardenas, Clifford Watson, James L. Pirkle, and Eric C. Donny
- 650** **Opiate and Tobacco Use and Exposure to Carcinogens and Toxicants in the Golestan Cohort Study**
Arash Etemadi, Hossein Poustchi, Antonia M. Calafat, Benjamin C. Blount, Victor R. De Jesús, Lanqing Wang, Akram Pourshams, Ramin Shakeri, Maki Inoue-Choi, Meredith S. Shiels, Gholamreza Roshandel, Gwen Murphy, Connie S. Sosnoff, Deepak Bhandari, Jun Feng, Baoyun Xia, Yuesong Wang, Lei Meng, Farin Kamangar, Paul Brennan, Paolo Boffetta, Sanford M. Dawsey, Christian C. Abnet, Reza Malekzadeh, and Neal D. Freedman
- 659** **Biomarkers of Exposure among Adult Smokeless Tobacco Users in the Population Assessment of Tobacco and Health Study (Wave 1, 2013–2014)**
Yu-Ching Cheng, Carolyn M. Reyes-Guzman, Carol H. Christensen, Brian L. Rostron, Kathryn C. Edwards, Lanqing Wang, Jun Feng, Jeffery M. Jarrett, Cynthia D. Ward, Baoyun Xia, Heather L. Kimmel, Kevin Conway, Carmine Leggett, Kristie Taylor, Charlie Lawrence, Ray Niaura, Mark J. Travers, Andrew Hyland, Stephen S. Hecht, Dorothy K. Hatsukami, Maciej L. Goniewicz, Nicolette Borek, Benjamin C. Blount, and Dana M. van Bommel
- 668** **High Extratumoral Mast Cell Counts Are Associated with a Higher Risk of Adverse Prostate Cancer Outcomes**
Heidi Hempel Sullivan, Christopher M. Heaphy, Ibrahim Kulac, Nathan Cuka, Jiayun Lu, John R. Barber, Angelo M. De Marzo, Tamara L. Lotan, Corinne E. Joshu, and Karen S. Sfanos
- 676** **Racial Difference in Prostate Cancer Cell Telomere Lengths in Men with Higher Grade Prostate Cancer: A Clue to the Racial Disparity in Prostate Cancer Outcomes**
Christopher M. Heaphy, Corinne E. Joshu, John R. Barber, Christine Davis, Reza Zarinshenas, Angelo M. De Marzo, Tamara L. Lotan, Karen S. Sfanos, Alan K. Meeker, and Elizabeth A. Platz
- 681** **Mitochondrial DNA Copy-Number Variation and Pancreatic Cancer Risk in the Prospective EPIC Cohort**
Manuel Gentiluomo, Verena A. Katzke, Rudolf Kaaks, Anne Tjønneland, Gianluca Severi, Vittorio Perduca, Marie-Christine Boutron-Ruault, Elisabete Weiderpass, Pietro Ferrari, Theron Johnson, Matthias B. Schulze, Manuela Bergmann, Antonia Trichopoulou, Anna Karakatsani, Carlo La Vecchia, Domenico Palli, Sara Grioni, Salvatore Panico, Rosario Tumino, Carlotta Sacerdote, Bas Bueno-de-Mesquita, Roel Vermeulen, Torkjel M. Sandanger, J. Ramón Quirós, Miguel Rodríguez-Barranco, Pilar Amiano, Sandra Colorado-Yohar, Eva Ardanaz, Malin Sund, Kay-Tee Khaw, Nicholas J. Wareham, Julie A. Schmidt, Paula Jakszyn, Luca Morelli, Federico Canzian, and Daniele Campa
- NULL RESULTS IN BRIEF**
- 687** **Shift Work and Working at Night in Relation to Breast Cancer Incidence**
Marina R. Sweeney, Dale P. Sandler, Nicole M. Niehoff, and Alexandra J. White
- ASPO 44TH ANNUAL MEETING ABSTRACTS**
- 690** **ABSTRACTS • 44th Annual Meeting • American Society of Preventive Oncology, Marriott Tucson University Park, Tucson, Arizona, March 22–24, 2020**

TABLE OF CONTENTS

ABOUT THE COVER

The cover image is adapted from Figure 1 in the article, "High Extratumoral Mast Cell Counts Are Associated with a Higher Risk of Adverse Prostate Cancer Outcomes," by Hempel Sullivan and colleagues. The figure shows IHC for mast cell tryptase in prostate cancer bone metastases. Given the authors' previous findings that low intratumoral and high extratumoral mast cell numbers are associated with higher risk of biochemical recurrence after radical prostatectomy, this study assessed this relationship with race and the development of metastases. Results showed intratumoral and extratumoral mast cell counts were significantly lower in tissues from African-American compared to European-American men, but not within strata of cancer grade. Mast cell numbers were similarly associated with risk of biochemical recurrence and metastases in African-American and European-American men. Higher numbers of benign tissue mast cells are associated with a higher risk of adverse outcomes after radical prostatectomy, including metastatic prostate cancer. For more information, see the article beginning on page 668.



Cancer Epidemiology, Biomarkers & Prevention

AACR American Association
for Cancer Research

29 (3)

Cancer Epidemiol Biomarkers Prev 2020;29:525-696.

Updated version Access the most recent version of this article at:
<http://cebp.aacrjournals.org/content/29/3>

E-mail alerts [Sign up to receive free email-alerts](#) related to this article or journal.

Reprints and Subscriptions To order reprints of this article or to subscribe to the journal, contact the AACR Publications Department at pubs@aacr.org.

Permissions To request permission to re-use all or part of this article, use this link <http://cebp.aacrjournals.org/content/29/3>. Click on "Request Permissions" which will take you to the Copyright Clearance Center's (CCC) Rightslink site.