

Correction

Correction: Evaluating Genetic Risk for Prostate Cancer among Japanese and Latinos

In this article (Cancer Epidemiol Biomarkers Prev 2012;21:2048-58), which was published in the November 2012 issue of *Cancer Epidemiology, Biomarkers & Prevention* (1), the legend for Figure 1 is incorrect in that the ethnic groups are switched, misidentifying the ethnic group shown in parts A and B. The figure legend should read, "Manhattan plot for Japanese (A) and Latinos (B)." The figure with the correct legend is shown below. The publisher regrets the error.

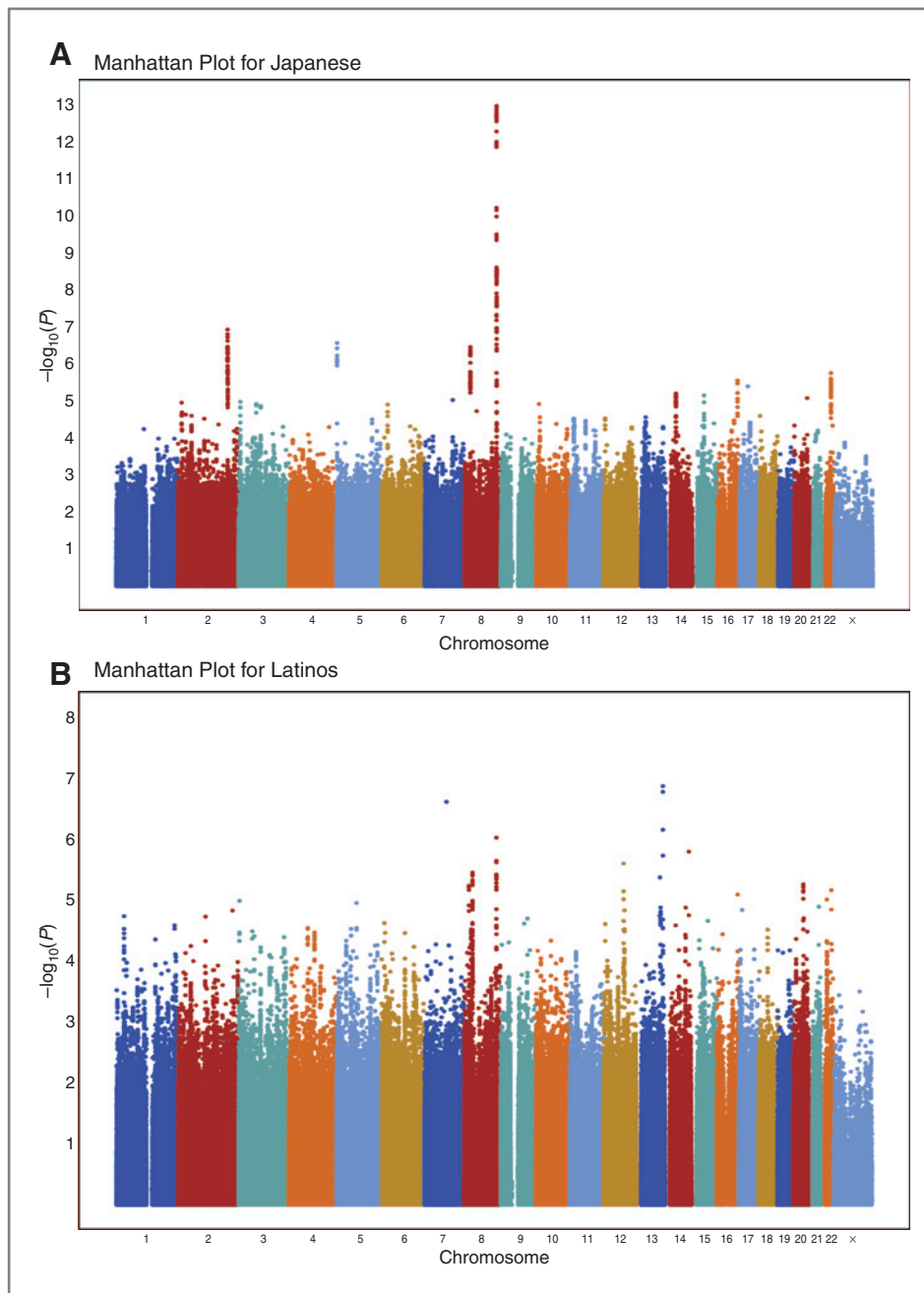


Figure 1. Manhattan plot for Japanese (A) and Latinos (B).

The text of the results section refers to the correct ethnic group (i.e., Fig. 1A Japanese and Fig. 1B Latinos).

Reference

1. Cheng I, Chen GK, Nakagawa H, He J, Wan P, Laurie CC, et al. Evaluating genetic risk for prostate cancer among Japanese and Latinos. *Cancer Epidemiol Biomarkers Prev* 2012;21:2048–58.

Published OnlineFirst May 16, 2013.

doi: 10.1158/1055-9965.EPI-13-0376

©2013 American Association for Cancer Research.

Cancer Epidemiology, Biomarkers & Prevention

Correction: Evaluating Genetic Risk for Prostate Cancer among Japanese and Latinos

Cancer Epidemiol Biomarkers Prev 2013;22:1168-1169. Published OnlineFirst May 16, 2013.

Updated version Access the most recent version of this article at:
doi:[10.1158/1055-9965.EPI-13-0376](https://doi.org/10.1158/1055-9965.EPI-13-0376)

Cited articles This article cites 1 articles, 1 of which you can access for free at:
<http://cebp.aacrjournals.org/content/22/6/1168.full#ref-list-1>

E-mail alerts [Sign up to receive free email-alerts](#) related to this article or journal.

Reprints and Subscriptions To order reprints of this article or to subscribe to the journal, contact the AACR Publications Department at pubs@aacr.org.

Permissions To request permission to re-use all or part of this article, use this link
<http://cebp.aacrjournals.org/content/22/6/1168>.
Click on "Request Permissions" which will take you to the Copyright Clearance Center's (CCC) Rightslink site.