

Cancer Survivors in the United States: Prevalence across the Survivorship Trajectory and Implications for Care

Janet S. de Moor¹, Angela B. Mariotto², Carla Parry³, Catherine M. Alfano¹, Lynne Padgett³, Erin E. Kent⁴, Laura Forsythe^{5,6}, Steve Scoppa⁷, Mark Hachey⁷, and Julia H. Rowland¹

Abstract

Background: Cancer survivors represent a growing population, heterogeneous in their need for medical care, psychosocial support, and practical assistance. To inform survivorship research and practice, this manuscript will describe the prevalent population of cancer survivors in terms of overall numbers and prevalence by cancer site and time since diagnosis.

Methods: Incidence and survival data from 1975–2007 were obtained from the Surveillance, Epidemiology, and End Results Program and population projections from the United States Census Bureau. Cancer prevalence for 2012 and beyond was estimated using the Prevalence Incidence Approach Model, assuming constant future incidence and survival trends but dynamic projections of the U.S. population.

Results: As of January 1, 2012, approximately 13.7 million cancer survivors were living in the United States with prevalence projected to approach 18 million by 2022. Sixty-four percent of this population have survived 5 years or more; 40% have survived 10 years or more; and 15% have survived 20 years or more after diagnosis. Over the next decade, the number of people who have lived 5 years or more after their cancer diagnosis is projected to increase approximately 37% to 11.9 million.

Conclusions: A coordinated agenda for research and practice is needed to address cancer survivors' long-term medical, psychosocial, and practical needs across the survivorship trajectory.

Impact: Prevalence estimates for cancer survivors across the survivorship trajectory will inform the national research agenda as well as future projections about the health service needs of this population. *Cancer Epidemiol Biomarkers Prev*; 22(4); 561–70. ©2013 AACR.

Introduction

The number of people diagnosed with cancer during their lifetime has been steadily increasing. This trend is due to 2 complementary phenomena. The first is an improvement in cancer survival rates, driven by advances in early detection and improvements in cancer treatment (1). The second, and most significant, is the aging of the population (2). Because cancer incidence rates tend to

increase with age, an aging population results in progressively more people being diagnosed with cancer. It is estimated that two-thirds of all cancer survivors will be age 65 or older by 2020 (3). The growing population of cancer survivors will put pressure on a healthcare system in which cancer drug shortages are increasingly common and the demand for oncology services is poised to outpace the supply of oncologists (4–6). The growing number of older survivors also presents a unique challenge to the healthcare system because older cancer survivors are more likely to have multiple chronic diseases and tend to experience poorer physical functioning than younger survivors (7, 8).

As the number of cancer survivors increases so does the cost of cancer care. By 2020, it is estimated that population growth alone will escalate annual costs of cancer care by 27% (9). Health care costs in the first year after a cancer diagnosis tend to be higher than annual costs thereafter for survivors who are not in their last year of life (9, 10). Nevertheless, among survivors who are more than 1-year postdiagnosis, annual healthcare expenditures are double that of the general population, suggesting that the economic burden of cancer in terms of medical expenditures is both considerable and persistent (11).

Authors' Affiliations: ¹Office of Cancer Survivorship, National Cancer Institute, Bethesda, Maryland; ²Surveillance Research Program, National Cancer Institute, Bethesda, Maryland; ³Behavioral Research Program, National Cancer Institute, Bethesda, Maryland; ⁴Applied Research Program, National Cancer Institute, Bethesda, Maryland; ⁵Cancer Prevention Fellowship Program, Division of Cancer Prevention, National Cancer Institute, Bethesda, Maryland; ⁶Patient-Centered Outcomes Research Institute, Washington; and ⁷IMS, Falls Church, Virginia

Note: Findings and conclusions in this report are those of the authors and do not necessarily represent the official position of the National Cancer Institute or the Patient-Centered Outcomes Research Institute.

Corresponding Author: Janet S. de Moor, Office of Cancer Survivorship, Division of Cancer Control and Population Sciences, National Cancer Institute/NIH, 6116 Executive Boulevard, Suite 404, Bethesda, MD 20892. Phone: 301-594-2723; Fax: 301-594-5070; E-mail: janet.demoor@nih.gov

doi: 10.1158/1055-9965.EPI-12-1356

©2013 American Association for Cancer Research.

The survivorship trajectory: Treatment pathways and patients' experiences

Cancer survivors' need for medical and supportive care services evolve from the point of diagnosis forward. In general, primary treatment ensues shortly after diagnosis with therapy typically consisting of surgery, radiation and/or chemotherapy. Cancer and its treatment can precipitate a range of physical and psychosocial sequelae that may require additional care; most commonly, functional limitations, fatigue, pain, cognitive changes, body image concerns, sexual dysfunction, psychosocial issues, and socioeconomic problems (12–16). The period immediately following the end of treatment presents another set of challenges as cancer survivors experience changes in the frequency of contact with their healthcare team, manage the lingering side effects of treatment, and resume important social roles and activities—all of which can precipitate feelings of distress (17–19). Following primary treatment, survivors' health service needs will vary depending on their clinical trajectory and treatment toxicities, which can vary substantially. Although some survivors will require no additional treatment others will undergo maintenance therapy (e.g., hormonal therapy) to lower their risk of recurrence. Survivors diagnosed with advanced or metastatic disease may receive ongoing treatment in an effort to slow or halt the progression of their disease or to palliate symptoms. In many cases, the acute effects of treatment begin to subside as time since diagnosis increases (15, 20, 21); however, a proportion of survivors will experience lingering side effects of their treatment that can persist for many years, negatively affecting quality of life (14–16, 21–23). Cancer treatment can also precipitate health problems that arise months or years after the end of active treatment. These late effects include second malignancies, disorders of the cardiovascular, genito-urinary or gastrointestinal systems, gonadal toxicity and endocrine disorders, compromised pulmonary function, and neurological and neurophysiological sequelae (24, 25). Data from the National Health Interview Survey, in which over 60% of cancer survivors were 5 or more years postdiagnosis, suggested that approximately 30% of survivors were in fair or poor health, 17% were unable to work due to health problems, and 58% had one or more functional limitation (26). Across each of these outcomes, cancer survivors had poorer health and functioning than people without a cancer history (26).

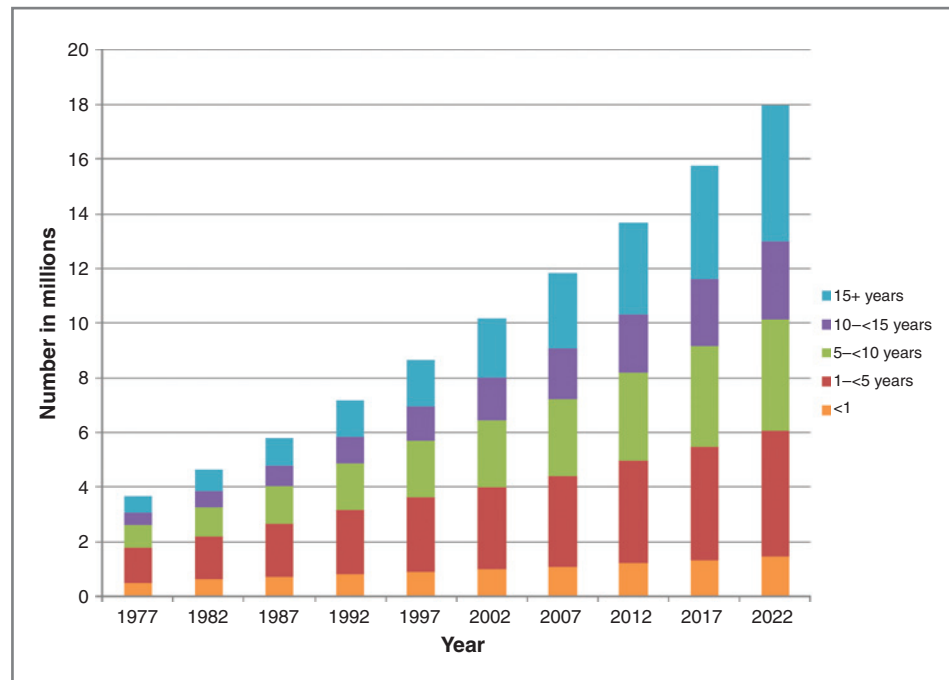
Survivors at the end of life report worse self-reported health, more activity limitations and lower values on the Health Activities and Limitations Index compared to other survivors (27). At the end of life, contact with the healthcare system becomes more frequent as survivors pursue salvage therapy, palliative care, or hospice. That over one quarter of total Medicare payments go to beneficiaries in their last year of life reflects the intensive medical care received during this period (28). In fact, healthcare costs for survivors in the last year of life are higher than costs incurred at other times following diagnosis (9).

To inform cancer survivorship research and health care practice and policy, this manuscript will describe the prevalent population of cancer survivors in terms of overall numbers and prevalence by cancer site and time since diagnosis. To estimate the extent to which the number of cancer survivors is estimated to increase over time, prevalence estimates will be projected through the year 2022.

Materials and Methods

Cancer prevalence was modeled using the Prevalence Incidence Approach Model (PIAMOD), which calculates prevalence from cancer survival and cancer incidence all-cause mortality (29, 30). The method first fits parametric models to incidence and survival data. Complete prevalence is then calculated and projected as the sum of the incidence and survival models product. In this study, we used the first malignant cancer by cancer site diagnosed between 1975 and 2007 from the 9 oldest registries in the Surveillance, Epidemiology, and End Results (SEER) program. The sample comprises children and adults who have been diagnosed with a broad range of cancers. However, cases of *in situ* disease and basal or squamous cell skin cancers were excluded from the sample. The most recent year of available data (2008) was excluded due to anticipated undercounts because of reporting delay. Incidence counts were estimated by applying SEER incidence proportions by cancer site, sex, year, age, and race to the respective U.S. populations. U.S. populations (1975–2009) and projections from 2010 through 2022 were obtained from the U.S. Census Bureau. The National Center for Health Statistics U.S. mortality data from 1969 to 2008 were obtained from the SEER*Stat software, and projected mortality rates for 2009 to 2022 were calculated by applying the 2006 to 2008 mortality rates by age and sex to the respective U.S. populations. Complete cancer prevalence by years since diagnosis, for years beyond 2007 (i.e., the last year of data) was projected assuming constant future mortality, incidence, and survival trends, but dynamic projections of the U.S. population. The modeled prevalence estimates and projections were adjusted to match the 1/1/2009 cancer prevalence reported in SEER Cancer Statistics Review, 1975 to 2009 (1) that uses the prevalence data more directly and with fewer assumptions. For each cancer site and sex, we calculated an adjustment by comparing the 1/1/2009 modeled prevalence with the 1/1/2009 observed prevalence (1). The cancer-specific adjustments were applied to the whole series of modeled prevalence from 1975 through 2022. The PIAMOD method also provides estimates by time since diagnosis in years. We have used 0 to less than 1 years from diagnosis to represent survivors receiving more intensive care in the first year after diagnosis, 1 to less than 5 years survivors in a more intensive monitoring phase, 5 to less than 10 years, 10 to less than 15 years, and 15+ years to represent long-term survivors in the survivorship trajectory.

Figure 1. Estimated and projected number of cancer survivors in the United States from 1977 to 2022 by years since diagnosis.



Results

The number of people currently living who have been diagnosed with cancer during their lifetime has been steadily increasing since the 1970s (Fig. 1). As of January 1, 2012, there were an estimated 13.7 million people in the United States who had been diagnosed with cancer (Table 1), which is approximately a 3.4 fold increase compared with 1975. Over the next decade, the number of cancer survivors is projected to increase by 31% to almost 18 million¹, which represents an increase of more than 4 million survivors in 10 years.

Women with breast cancer account for 22% of survivors, whereas men with prostate cancer account for 20% of survivors (Fig. 2). Although lung cancer is the second most common cancer diagnosed in men and women, only 3% of survivors were diagnosed with lung cancer. It is estimated that 64% of cancer survivors have survived 5 years or more; 40% have survived 10 years or more; and 15% have survived 20 years or more after their diagnosis (Fig. 3). Although the proportion of long-term survivors is quite high overall, there is considerable heterogeneity in the proportion of long-term survivors by cancer site (Fig. 4). For example, of the 245,022 cervical cancer survivors currently living in the United States, 83% have lived 5 years or more after diagnosis. In contrast, of the 412,226 lung cancer survivors currently living in the United States, only 42% have survived 5 years or more after diagnosis. Generally speaking, the proportion of long-term survivors for a particular cancer is both a function of the 5-year survival rates for that cancer as well as the median age

at diagnosis such that the proportion of long-term survivors will be relatively high for cancers with a high 5-year survival rate but a low median age at diagnosis.

The number of new cancer cases and the number of long-term survivors is projected to increase over the next decade (Fig. 1). From 2012 to 2022, the number of survivors who are less than 5 years from diagnosis will increase from 4.9 million to 6.0 million or 22%; whereas the number of survivors who are 5 years or more from diagnosis will increase from 8.7 million to 11.9 million or 37%. Over the next decade, the relative proportion of survivors who are 5 years or more from diagnosis will increase from 64% to 67% with a corresponding decrease in the relative proportion of survivors who are less than 5 years from diagnosis. Of note, the largest relative increase in the number of cancer survivors by time since diagnosis will be among people who are 15+ years postdiagnosis where prevalence will increase from 3.4 million or 25% of all survivors in 2012 to 5.0 million or 28% of all survivors in 2022.

Discussion

Over the next decade, prevalence across the survivorship trajectory is projected to increase as a result of increasing cancer incidence rates associated with the aging of the population and improvements in long-term survival rates. Women with breast cancer and men with prostate cancer represent the 2 largest groups of cancer survivors due to the relatively high incidence and low mortality rates associated with these diseases. Women are overrepresented among survivors who are 10+ years post diagnosis, because of the large proportion of women diagnosed with breast cancer, of which 90% will survive for 5 years or longer (31), as well as the longer life

¹Projected prevalence = 17,981,391

Table 1. Estimated number of cancer survivors by age, gender, and cancer site as of January 1, 2012 (invasive cancers and first primary cases only)

	All ages	0-9	10-19	20-29	30-39	40-49	50-59	60-69	70-79	80+
All sites										
Male	6,442,282	18,499	43,137	74,785	134,634	350,354	930,143	1,705,730	1,858,259	1,326,741
Female	7,241,571	8,636	36,912	105,114	250,921	647,838	1,365,042	1,801,428	1,607,632	1,418,047
Total	13,683,853	2,7135	80,049	179,899	385,555	998,192	2,295,185	3,507,158	3,465,891	2,744,788
Bladder										
Male	437,179	15	112	590	2,700	13,220	49,481	109,759	141,414	119,888
Female	148,208	22	102	350	1,131	4,450	15,161	32,660	44,590	49,743
Total	585,387	37	214	940	3,831	17,670	64,642	142,419	186,004	169,631
Breast										
Male	*	*	*	*	*	*	*	*	*	*
Female	2,971,606	0	27	2,658	40,168	226,604	599,361	808,281	696,389	598,118
Total	2,971,606	0	27	2,658	40,168	226,604	599,361	808,281	696,389	598,118
Cervix										
Male	*	*	*	*	*	*	*	*	*	*
Female	245,022	0	61	2,333	13,823	36,239	56,852	57,009	42,848	35,856
Total	245,022	0	61	2,333	13,823	36,239	56,852	57,009	42,848	35,856
Colorectal										
Male	595,213	9	105	846	4,744	23,681	82,493	158,470	180,450	144,415
Female	603,527	11	138	1,034	5,174	22,995	73,927	137,208	170,380	192,659
Total	1,198,740	20	243	1,880	9,918	46,676	156,421	295,678	350,830	337,074
Oral cavity										
Male	185,242	54	274	1,089	3,874	15,150	42,487	57,738	40,628	23,948
Female	95,521	102	467	1,343	3,155	8,275	18,320	24,770	20,958	18,131
Total	280,763	156	741	2,432	7,030	23,425	60,807	82,508	61,585	42,079
Kidney										
Male	212,996	1,602	2,344	2,419	4,149	15,494	42,469	62,523	51,422	30,573
Female	147,882	1,767	2,955	3,035	4,202	11,509	26,474	36,683	33,386	27,871
Total	360,878	3,368	5,299	5,455	8,351	27,003	68,943	99,206	84,808	58,444
Leukemia										
Male	167,737	5,704	11,242	13,467	13,842	18,282	27,358	32,441	27,210	18,192
Female	130,428	4,977	9,244	10,910	110,58	14,044	19,819	22,489	19,912	17,975
Total	298,165	10,680	20,486	24,376	24,900	32,326	47,177	54,929	47,122	36,167
Lung										
Male	189,077	0	6	76	746	5,799	25,758	57,097	60,794	38,800
Female	223,149	1	15	154	1,141	7,332	29,405	61,049	67,547	56,503
Total	412,226	2	21	230	1,887	13,131	55,163	11,8147	128,342	95,303
Melanoma										
Male	481,040	48	799	5,367	18,944	52,796	105,289	129,682	102,888	65,227
Female	496,210	52	1,443	11,177	35,356	77,324	117,430	112,466	78,783	62,179
Total	977,250	100	2,242	16,544	54,300	130,121	222,719	242,147	181,672	127,407
Ovary										
Male	*	*	*	*	*	*	*	*	*	*
Female	192,753	46	891	3,016	6,819	18,913	41,155	50,762	39,499	31,652
Total	192,753	46	891	3,016	6,819	18,913	41,155	50,762	39,499	31,652
Prostate										
Male	2,778,626	0	0	11	770	23,149	236,096	783,687	1,005,993	728,921
Female	*	*	*	*	*	*	*	*	*	*
Total	2,778,626	0	0	11	770	23,149	236,096	783,687	1,005,993	728,921
Corpus										
Male	*	*	*	*	*	*	*	*	*	*
Female	606,913	0	21	586	4,558	24,947	89,380	163,951	167,142	156,328
Total	606,913	0	21	586	4,558	24,947	89,380	163,951	167,142	156,328

(Continued on the following page)

Table 1. Estimated number of cancer survivors by age, gender, and cancer site as of January 1, 2012 (invasive cancers and first primary cases only) (Cont'd)

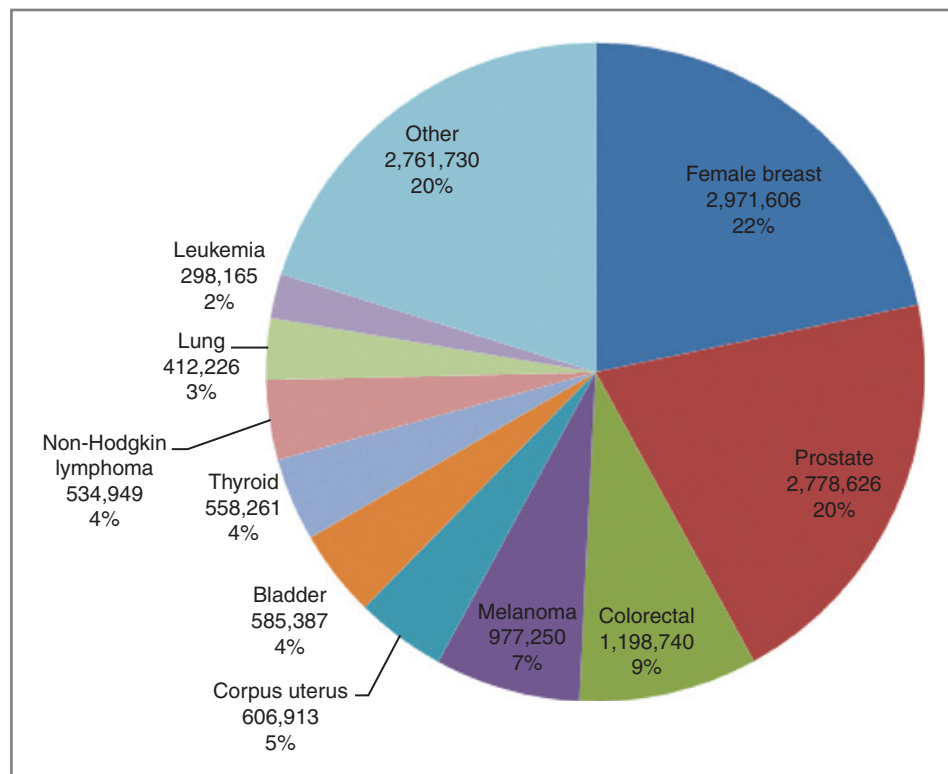
	All ages	0-9	10-19	20-29	30-39	40-49	50-59	60-69	70-79	80+
Hodgkin lymphoma										
Male	96,841	150	2,186	9,458	16,391	21,726	22,589	15,114	6,546	2,681
Female	91,751	65	1,835	10,195	17,763	21,359	19,743	12,081	5,533	3,177
Total	188,591	214	4,021	19,653	34,154	43,084	42,333	27,195	12,079	5,858
Non-Hodgkin lymphoma										
Male	279,495	648	2,709	6,117	12,484	29,062	58,052	73,431	59,868	37,125
Female	255,454	416	1,927	4,722	9,068	20,765	44,767	62,484	58,686	52,620
Total	534,949	1,063	4,636	10,839	21,552	49,827	102,819	135,915	118,553	89,744
Thyroid										
Male	121,670	21	431	2,913	8,942	19,912	30,854	29,542	18,717	10,340
Female	436,590	39	1,657	14,742	44,872	84,921	108,822	89,072	54,022	38,443
Total	558,261	60	2,087	17,655	53,814	104,832	139,676	118,614	72,739	48,783
Testis										
Male	230,913	73	2,210	16,124	40,917	61,946	60,052	33,768	11,767	4,055
Female	*	*	*	*	*	*	*	*	*	*
Total	230,913	73	2,210	16,124	40,917	61,946	60,052	33,768	11,767	4,055

NOTE: Table 1 includes prevalence data for all cancer sites combined and data for the 16 most prevalent cancer sites. *, not applicable.

expectancy of women (32). Although prevalence is expected to increase across the survivorship trajectory, the largest group of survivors, both currently and moving forward, are those who are 5 years or more from diagnosis.

The burgeoning cohort of survivors where the absolute number of survivors is projected to increase by approximately 4.3 million survivors over the next 10 years presents a significant challenge to the health care system. This is especially true given that most survivors can now

Figure 2. Estimated number of cancer survivors in the United States as of January 1, 2012 by cancer site.



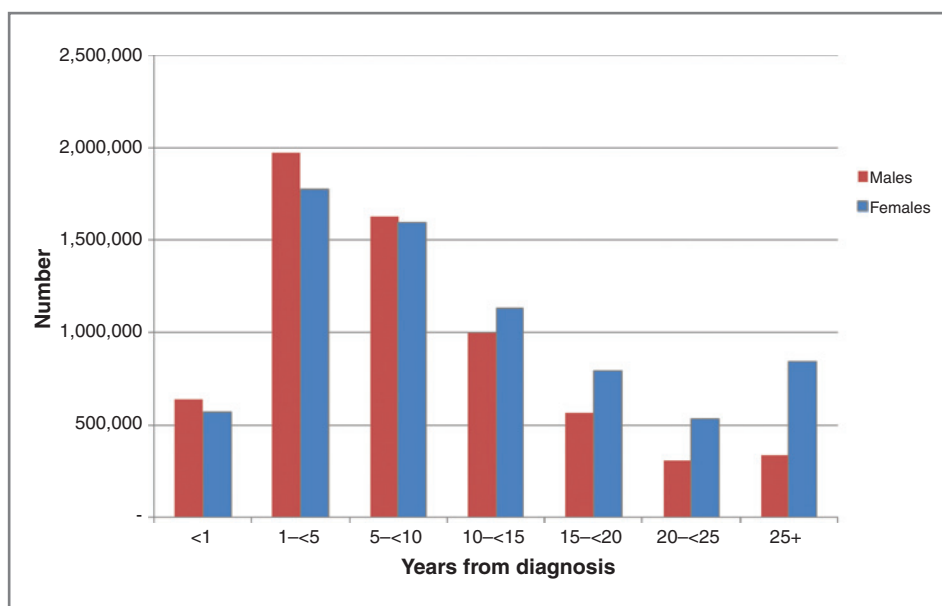


Figure 3. Estimated number of cancer survivors in the United States as of January 1, 2012 by time since diagnosis and sex.

expect to live longer after diagnosis and often have complex needs stemming from chronic and late effects of treatment as well as comorbid diseases. The growth of the cancer survivor population will drive up the overall cost of cancer care an estimated 27% by the year 2020 from 2010 levels with more acute escalations in costs projected for certain subgroups of survivors (9). Costs for prostate and breast cancer survivors in the continuing phase of care (i.e., ≥ 1 -year postdiagnosis but >1 year from

death) are projected to increase 42% and 32%, respectively (9). Although annual costs for survivors in the continuing phase of care tend to be low compared with survivors who are either less than 1-year postdiagnosis or in the last year of life, the large number of survivors in the continuing phase of care is a significant driver of healthcare costs.

Over the next decade, a coordinated agenda for research and practice is needed to better understand

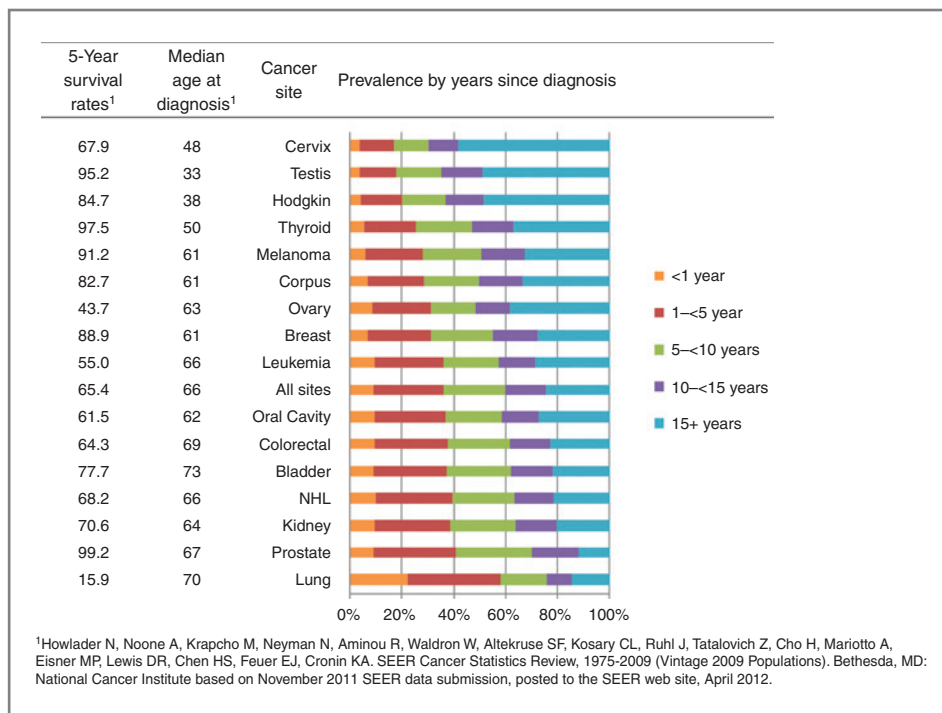


Figure 4. Estimated number of cancer survivors in the United States as of January 1, 2012 by cancer site and years from diagnosis.

and address the medical, psychosocial, and practical needs of cancer survivor across the survivorship trajectory. To this end, we propose the following recommendations.

Identify effective and efficient models for delivering long-term follow up care

Clinical guidelines for survivorship care have been issued by professional societies and the Institute of Medicine (33). However, to date, guidelines pertaining to survivorship care have been largely based on consensus rather than empirical data. The formal evaluation of follow-up care models is in its infancy, and most comparative studies in this area have focused on survivors at low risk for adverse health outcomes (33). Few studies have evaluated the cost effectiveness of different approaches (33). Risk-based follow-up care where the intensity of follow-up care is matched to survivors' risk for long-term and late-onset treatment effects is increasingly being explored. For example, risk-based follow-up care in the context of a shared care model has been proposed for the long-term follow up of childhood cancer survivors (34, 35). In addition, risk stratification of follow-up care is a central component of the United Kingdom's National Cancer Survivorship Initiative (36). However, as with other models of care, evaluation is needed to assess whether a risk-based model results in improved clinical, cost, quality of life, and satisfaction with care outcomes.

Develop the infrastructure to collect long-term clinical, psychosocial, and behavioral data from adult cancer survivors

To develop and evaluate models of follow-up care, longitudinal data on current and emerging long-term and late effects associated with different cancer treatments are needed to characterize survivors' level of risk across a range of psychosocial and clinical risk factors (37). Extant clinical trials, epidemiology cohorts and consortia, data from integrated Health Maintenance Organizations, and population-based studies provide a wealth of data that can be leveraged for outcomes research with cancer survivors. A report summarizing the activities of the 2011 NCI-sponsored workshop, "Utilizing Data from Cancer Survivor Cohorts: Understanding the Current State of Knowledge and Developing Future Research Priorities," highlights examples of how each of these data sources can be used for cancer survivorship research and recommends priority directions for future research, data collection considerations, and a summary of resources needed to advance survivorship research (38). A recognized challenge of using existing data for survivorship research is that research questions are constrained by the data available, and many existing cohort studies lack detailed treatment exposure data and data on tumor pathology. Thus, the need persists for a longitudinal cohort that captures both detailed information about the tumor and treat-

ment history, biospecimens for future molecular, genetic, and genomic research, as well as patient-reported outcomes, characterizing survivors' health behaviors and their physical, psychosocial, and practical needs after the conclusion of cancer treatment.

Optimize health IT and other technologies that facilitate care coordination and improve survivors' long-term health outcomes

Over the last decade, technological advances have given rise to electronic medical records (EMR), personal health records, real-time capture of biological and self-report data, and platforms to deliver interventions via mobile devices. Health IT in particular has the potential to improve care coordination by giving all members of the health care team access to a survivor's health information. Recent research found that 75% of cancer survivors felt it was very important for their health providers to have access their medical information electronically—suggesting a desire for communication and coordination among their providers (39). Unfortunately, many existing electronic record systems are proprietary and only accessible to providers practicing in a given healthcare setting (40). Lack of interoperability among different EMR systems is an important barrier to delivering appropriate long-term follow-up care to cancer survivors because providers outside of the cancer center (e.g., PCPs and other specialists) do not have direct access to cancer and treatment information and must rely on the survivors themselves to both possess and communicate a summary of their cancer and treatment. With the growing population of survivors, it is critical to enhance the capacity for health information exchange across health care settings. Current efforts to address this problem include the Health Information Technology for Economic and Clinical Health (HITECH) Act that was passed to incentivize the "meaningful use" of electronic health records and electronic health information exchange (41) and an alternative proposal by the President's Council of Advisors on Science and Technology who advocate creating a universal exchange language to enable the sharing of health information across electronic record systems (40). However, the impact of these approaches is yet unknown.

Advances in mHealth represent another vehicle for connecting survivors with extensive information about their disease and function as a resource to support survivors in managing their own health (42, 43). mHealth technology can also support effective symptom management by providing a way to monitor symptoms and other health problems and communicate this information to a healthcare provider (44, 45). As the use of mHealth technology increases, targeted outreach may be needed to overcome the "digital divide" and avoid social disparities in access to these promising new tools (46, 47). Further, because most cancer survivors are over the age of 65 (3), it is important to improve the acceptability and usability of mHealth technology among older adults. As of 2012, only 21% of older adults

used a mobile device to access the Internet and 13% owned a smart phone (48). It is possible that a combination of functional limitations (e.g., limited manual dexterity, impaired vision) and low perceived utility of mobile devices accounts for the relatively low uptake among older adults. However, efforts are needed to fully characterize and address the range of factors affecting the use of mHealth technology among this population. Efforts to evaluate the reliability and validity of new technology for all segments of the population needs to keep pace with the development of novel tools, and evaluation methods are needed to provide timely data about this rapidly evolving field (49). Ongoing efforts and partnerships especially between academic researchers, information technology companies, and cancer care specialists in diverse communities are needed to ensure that the devices, new platforms, and associated applications are based on cutting-edge biomedical and behavioral research (49).

Address important knowledge gaps about long-term survivors

Research is needed to better understand the needs of adult survivors who are more than 5 years post diagnosis—a group representing 64% of all cancer survivors. Most of what is known about cancer survivorship has stemmed from research conducted among breast cancer survivors. For the field of cancer survivorship to move forward, it is critical to gain a better understanding of the needs of survivors with other diagnoses and across the posttreatment trajectory. Finally, there is little research on survivors with recurrent disease or second cancers. Survivors with recurrent disease report distress, lack of energy, difficulty sleeping, pain, worry, and sexual dysfunction (50–52). However, there are few studies and fewer interventions dedicated to this clinical population.

Improve integrative palliative care

Research in palliative medicine has shown evidence that palliative care interventions are associated with lower costs of care, as well as increased quality of life and improved symptom management. Benefits of palliative care interventions also extend to grieving family members. In addition, recent studies provide preliminary data that early palliative care interventions increase not only quality of life, but also quantity of life (53, 54). Expanding research in this area to evaluate the optimal timing of palliative care interventions, concurrent palliative and oncologic treatments, and symptom management to those living significant periods of time with advanced disease (e.g., Stage IV breast cancer) could lead to both improved patient experiences in the last year of life, as well as decreased overall health care costs to patients, payers, and health systems.

Strengths and limitations

There were limitations to our analysis. Our estimates of cancer prevalence were based on cancer incidence

and survival from the SEER-9 areas, which do not cover the entire United States. The SEER areas had lower incidence rates than most other states and have been found to have higher socioeconomic status, greater urban population, and more specialty care than the rest of the U.S. population. Our prevalence estimates differ somewhat from estimates used in the calculations of costs of cancer care reported elsewhere (9). In both studies, the prevalence projections were based on constant incidence and survival trends but dynamic population trends. Thus, they reflect the impact of population dynamics, especially the aging effect, on the overall burden of cancer, under currently disseminated cancer control policies and interventions. Different future assumptions of survival and incidence trends have shown to have a smaller impact on projections of the number of cancer survivors compared with the aging of the U.S. population (9). A study of costs of cancer care (18) shows that using constant future incidence and survival, we underestimate the number of cancer survivors for kidney and melanoma cancers, for which incidence has been increasing and slightly overestimate survival for cancer sites that have decreasing incidence in the most recent years, for example, cervix, ovary, breast, prostate, colorectal, and lung cancers.

Conclusions and Impact

The proportion of cancer survivors in the United States is projected to increase 31% by the year 2022. Owing to advances in early detection and cancer treatment, people are living longer after a cancer diagnosis, giving rise to a growing proportion of long-term survivors. A multipronged approach is essential to address the needs of cancer survivors across the survivorship trajectory. Efforts are needed to identify effective and efficient models for delivering long-term follow-up care; develop infrastructure to collect long-term clinical and patient-reported outcome data from survivors; harness health IT and other technologies that facilitate care coordination and improvement in survivors' long-term health outcomes; address important knowledge gaps about long-term survivors; and improve integrative palliative care. Progress in these areas is critical to achieving optimal clinical, cost, quality of life, and satisfaction with care outcomes.

Disclosure of Potential Conflicts of Interest

No potential conflicts of interest were disclosed.

Authors' Contributions

Conception and design: J.S. de Moor, A.B. Mariotto, C. Parry, C.M. Alfano, L.S. Padgett, E.E. Kent, L.P. Forsythe, J.H. Rowland

Development of methodology: A.B. Mariotto, C. Parry, C.M. Alfano, S. Scoppa, J.H. Rowland

Analysis and interpretation of data (e.g., statistical analysis, biostatistics, computational analysis): J.S. de Moor, A.B. Mariotto, C.M. Alfano, E.E. Kent, S. Scoppa, M. Hachey, J.H. Rowland

Writing, review, and/or revision of the manuscript: J.S. de Moor, A.B. Mariotto, C. Parry, C.M. Alfano, L.S. Padgett, E.E. Kent, L.P. Forsythe, S. Scoppa, M. Hachey, J.H. Rowland
Administrative, technical, or material support (i.e., reporting or organizing data, constructing databases): S. Scoppa, M. Hachey
Study supervision: J.H. Rowland

The costs of publication of this article were defrayed in part by the payment of page charges. This article must therefore be hereby marked *advertisement* in accordance with 18 U.S.C. Section 1734 solely to indicate this fact.

Received December 4, 2012; revised February 8, 2013; accepted February 18, 2013; published OnlineFirst March 27, 2013.

References

- Howlader N, Noone A, Krapcho M, Neyman N, Aminou R, Waldron W, et al. (eds). SEER Cancer Statistics Review, 1975–2009 (Vintage 2009 Populations), National Cancer Institute; Bethesda, MD, http://seer.cancer.gov/csr/1975_2009_pops09/, based on November 2011 SEER data submission, posted to the SEER web site, April 2012.
- Vincent GK, Velkoff VA. U.S. Census Bureau. The Next Four Decades: The Older Population in the United States: 2010 to 2050. Population estimates and projections P25-1138. Washington, D.C.: U.S. Department of Commerce, Economics and Statistics Administration, U.S. Census Bureau; 2010.
- Parry C, Kent EE, Mariotto AB, Alfano CM, Rowland JH. Cancer survivors: a booming population. *Cancer Epidemiol Biomarkers Prev* 2011;20:1996–2005.
- Erikson C, Salsberg E, Forte G, Bruinooge S, Goldstein M. Future supply and demand for oncologists: challenges to assuring access to oncology services. *J Oncol Pract* 2007;3:79–86.
- Chabner BA. Drug shortages—a critical challenge for the generic-drug market. *N Engl J Med* 2011;365:2147–9.
- Gatesman ML, Smith TJ. The shortage of essential chemotherapy drugs in the United States. *N Engl J Med* 2011;365:1653–5.
- Bellizzi KM, Mustian KM, Palesh OG, Diefenbach M. Cancer survivorship and aging: moving the science forward. *Cancer* 2008;113:3530–9.
- Avis NE, Deimling GT. Cancer survivorship and aging. *Cancer* 2008;113:3519–29.
- Mariotto AB, Yabroff KR, Shao Y, Feuer EJ, Brown ML. Projections of the cost of cancer care in the United States: 2010–2020. *J Natl Cancer Inst* 2011;103:117–28.
- Yabroff KR, Lamont EB, Mariotto A, Warren JL, Topor M, Meekins A, et al. Cost of care for elderly cancer patients in the United States. *J Natl Cancer Inst* 2008;100:630–41.
- Short PF, Moran JR, Puneekar R. Medical expenditures of adult cancer survivors aged <65 years in the United States. *Cancer* 2011;117:2791–800.
- Reeve BB, Potosky AL, Smith AW, Han PK, Hays RD, Davis WW, et al. Impact of cancer on health-related quality of life of older Americans. *J Natl Cancer Inst* 2009;101:860–8.
- Alfano CM, Rowland JH. Recovery issues in cancer survivorship: a new challenge for supportive care. *Cancer J* 2006;12:432–43.
- Polsky D, Doshi JA, Marcus S, Oslin D, Rothbard A, Thomas N, et al. Long-term risk for depressive symptoms after a medical diagnosis. *Arch Intern Med* 2005;165:1260–6.
- Berger AM, Visovsky C, Hertzog M, Holtz S, Loberiza FR Jr. Usual and worst symptom severity and interference with function in breast cancer survivors. *J Support Oncol* 2012;10:112–8.
- Berger AM, Gerber LH, Mayer DK. Cancer-related fatigue: implications for breast cancer survivors. *Cancer* 2012;118:2261–9.
- Stanton AL. What happens now? Psychosocial care for cancer survivors after medical treatment completion. *J Clin Oncol* 2012;30:1215–20.
- Hewitt M, Greenfield S, Stovall E. From cancer patient to cancer survivor, lost in transition. Washington, D.C.: Institute of Medicine and National Research Council. The National Academies Press; 2006.
- Henselmans I, Helgeson VS, Seltman H, de Vries J, Sanderman R, Ranchar AV. Identification and prediction of distress trajectories in the first year after a breast cancer diagnosis. *Health Psychol* 2010;29:160–8.
- Costanzo ES, Lutgendorf SK, Mattes ML, Trehan S, Robinson CB, Tewfik F, et al. Adjusting to life after treatment: distress and quality of life following treatment for breast cancer. *Br J Cancer* 2007;97:1625–31.
- Michael YL, Kawachi I, Berkman LF, Holmes MD, Colditz GA. The persistent impact of breast carcinoma on functional health status: prospective evidence from the Nurses' Health Study. *Cancer* 2000;89:2176–86.
- Lazovich D, Robien K, Cutler G, Virnig B, Sweeney C. Quality of life in a prospective cohort of elderly women with and without cancer. *Cancer* 2009;115:4283–97.
- Baker F, Denniston M, Haffer SC, Liberatos P. Change in health-related quality of life of newly diagnosed cancer patients, cancer survivors, and controls. *Cancer* 2009;115:3024–33.
- Shad A, Myers SN, Hennessy K. Late effects in cancer survivors: "the shared care model". *Curr Oncol Rep* 2012;14:182–90.
- Fossa SD, Vassilopoulou-Sellin R, Dahl AA. Long term physical sequelae after adult-onset cancer. *J Cancer Surviv* 2008;2:3–11.
- Hewitt M, Rowland JH, Yancik R. Cancer survivors in the United States: Age, health, and disability. *J Gerontol* 2003;58:82–91.
- Yabroff KR, McNeel TS, Waldron WR, Davis WW, Brown ML, Clauser S, et al. Health limitations and quality of life associated with cancer and other chronic diseases by phase of care. *Med Care* 2007;45:629–37.
- Riley GF, Lubitz JD. Long-term trends in Medicare payments in the last year of life. *Health Serv Res* 2010;45:565–76.
- Verdecchia A, De Angelis G, Capocaccia R. Estimation and projections of cancer prevalence from cancer registry data. *Stat Med* 2002;21:3511–26.
- Mariotto AB, Yabroff KR, Feuer EJ, De Angelis R, Brown M. Projecting the number of patients with colorectal carcinoma by phases of care in the US: 2000–2020. *Cancer Causes Control* 2006;17:1215–26.
- Siegel R, Naishadham D, Jemal A. Cancer statistics, 2012. *CA Cancer J Clin* 2012;62:10–29.
- Minino AM, Murphy SL, Xu J, Kochanek KD. Deaths: final data for 2008. *Natl Vital Stat Rep* 2011;59:1–126.
- Howell D, Hack TF, Oliver TK, Chulak T, Mayo S, Aubin M, et al. Models of care for post-treatment follow-up of adult cancer survivors: a systematic review and quality appraisal of the evidence. *J Cancer Surviv* 2012;6:359–71.
- Oeffinger KC, McCabe MS. Models for delivering survivorship care. *J Clin Oncol* 2006;24:5117–24.
- Hudson MM, Landier W, Ganz PA. Impact of survivorship-based research on defining clinical care guidelines. *Cancer Epidemiol Biomarkers Prev* 2011;20:2085–92.
- Richards M, Corner J, Maher J. The National Cancer Survivorship Initiative: new and emerging evidence on the ongoing needs of cancer survivors. *Br J Cancer* 2011;105 Suppl 1:S1–4.
- Watson EK, Rose PW, Neal RD, Hulbert-Williams N, Donnelly P, Hubbard G, et al. Personalised cancer follow-up: risk stratification, needs assessment or both? *Br J Cancer* 2012;106:1–5.
- Elena JW, Travis LB, Simonds NI, Ambrosone CB, Ballard-Barbash R, Bhatia S, et al. Leveraging epidemiology and clinical studies of cancer outcomes: recommendations and opportunities for translational research. *J Natl Cancer Inst* 2013;105:85–94.
- Beckjord EB, Rechis R, Nutt S, Shulman L, Hesse BW. What do people affected by cancer think about electronic health information exchange? results from the 2010 LIVESTRONG Electronic Health Information Exchange Survey and the 2008 Health Information National Trends Survey. *J Oncol Pract* 2011;7:237–41.
- President's Council of Advisors on Science and Technology. Realizing the Full Potential of Health Information Technology to Improve Health-care for Americans: The Path Forward. Washington, DC: Executive Office of the President; 2010: 40.

41. Glaser J. HITECH lays the foundation for more ambitious outcomes-based reimbursement. *Am J Manag Care* 2010;16:SP19–23.
42. Gustafson DH, Hawkins R, McTavish F, Pingree S, Chen WC, Volrathongchai K, et al. Internet-based interactive support for cancer patients: are integrated systems better? *J Commun* 2008;58:238–57.
43. Baker TB, Hawkins R, Pingree S, Roberts LJ, McDowell HE, Shaw BR, et al. Optimizing eHealth breast cancer interventions: which types of eHealth services are effective? *Transl Behav Med* 2011;1:134–45.
44. Cleeland CS, Wang XS, Shi Q, Mendoza TR, Wright SL, Berry MD, et al. Automated symptom alerts reduce postoperative symptom severity after cancer surgery: a randomized controlled clinical trial. *J Clin Oncol* 2011;29:994–1000.
45. Ruland CM, Holte HH, Roislien J, Heaven C, Hamilton GA, Kristiansen J, et al. Effects of a computer-supported interactive tailored patient assessment tool on patient care, symptom distress, and patients' need for symptom management support: a randomized clinical trial. *J Am Med Inform Assoc* 2010;17:403–10.
46. Sun GH. The Digital divide in internet-based patient education materials. *Otolaryngol Head Neck Surg* 2012;147:855–7.
47. Lustria ML, Smith SA, Hinnant CC. Exploring digital divides: an examination of eHealth technology use in health information seeking, communication and personal health information management in the USA. *Health Informatics J* 2011;17:224–43.
48. Zickuhr K, Smith AB. Digital differences. Washington, D.C.: Pew Research Center; 2012.
49. Nilsen W, Kumar S, Shar A, Varoquiers C, Wiley T, Riley WT, et al. Advancing the science of mHealth. *J Health Commun* 2012;17 Suppl 1:5–10.
50. Kenne Sarenmalm E, Ohlen J, Oden A, Gaston-Johansson F. Experience and predictors of symptoms, distress and health-related quality of life over time in postmenopausal women with recurrent breast cancer. *Psychooncology* 2008;17:497–505.
51. Andrykowski MA. Physical and mental health status of survivors of multiple cancer diagnoses: findings from the National Health Interview Survey. *Cancer* 2012;118:3645–53.
52. Vivar CG, Canga N, Canga AD, Arantzamendi M. The psychosocial impact of recurrence on cancer survivors and family members: a narrative review. *J Adv Nurs* 2009;65:724–36.
53. Temel JS, Greer JA, Muzikansky A, Gallagher ER, Admane S, Jackson VA, et al. Early palliative care for patients with metastatic non-small-cell lung cancer. *N Engl J Med* 2010;363:733–42.
54. Greer JA, Pirl WF, Jackson VA, Muzikansky A, Lennes IT, Heist RS, et al. Effect of early palliative care on chemotherapy use and end-of-life care in patients with metastatic non-small-cell lung cancer. *J Clin Oncol* 2012;30:394–400.

Cancer Epidemiology, Biomarkers & Prevention

Cancer Survivors in the United States: Prevalence across the Survivorship Trajectory and Implications for Care

Janet S. de Moor, Angela B. Mariotto, Carla Parry, et al.

Cancer Epidemiol Biomarkers Prev 2013;22:561-570. Published OnlineFirst March 27, 2013.

Updated version Access the most recent version of this article at:
doi:[10.1158/1055-9965.EPI-12-1356](https://doi.org/10.1158/1055-9965.EPI-12-1356)

Cited articles This article cites 49 articles, 8 of which you can access for free at:
<http://cebp.aacrjournals.org/content/22/4/561.full#ref-list-1>

Citing articles This article has been cited by 46 HighWire-hosted articles. Access the articles at:
<http://cebp.aacrjournals.org/content/22/4/561.full#related-urls>

E-mail alerts [Sign up to receive free email-alerts](#) related to this article or journal.

Reprints and Subscriptions To order reprints of this article or to subscribe to the journal, contact the AACR Publications Department at pubs@aacr.org.

Permissions To request permission to re-use all or part of this article, use this link
<http://cebp.aacrjournals.org/content/22/4/561>.
Click on "Request Permissions" which will take you to the Copyright Clearance Center's (CCC) Rightslink site.